

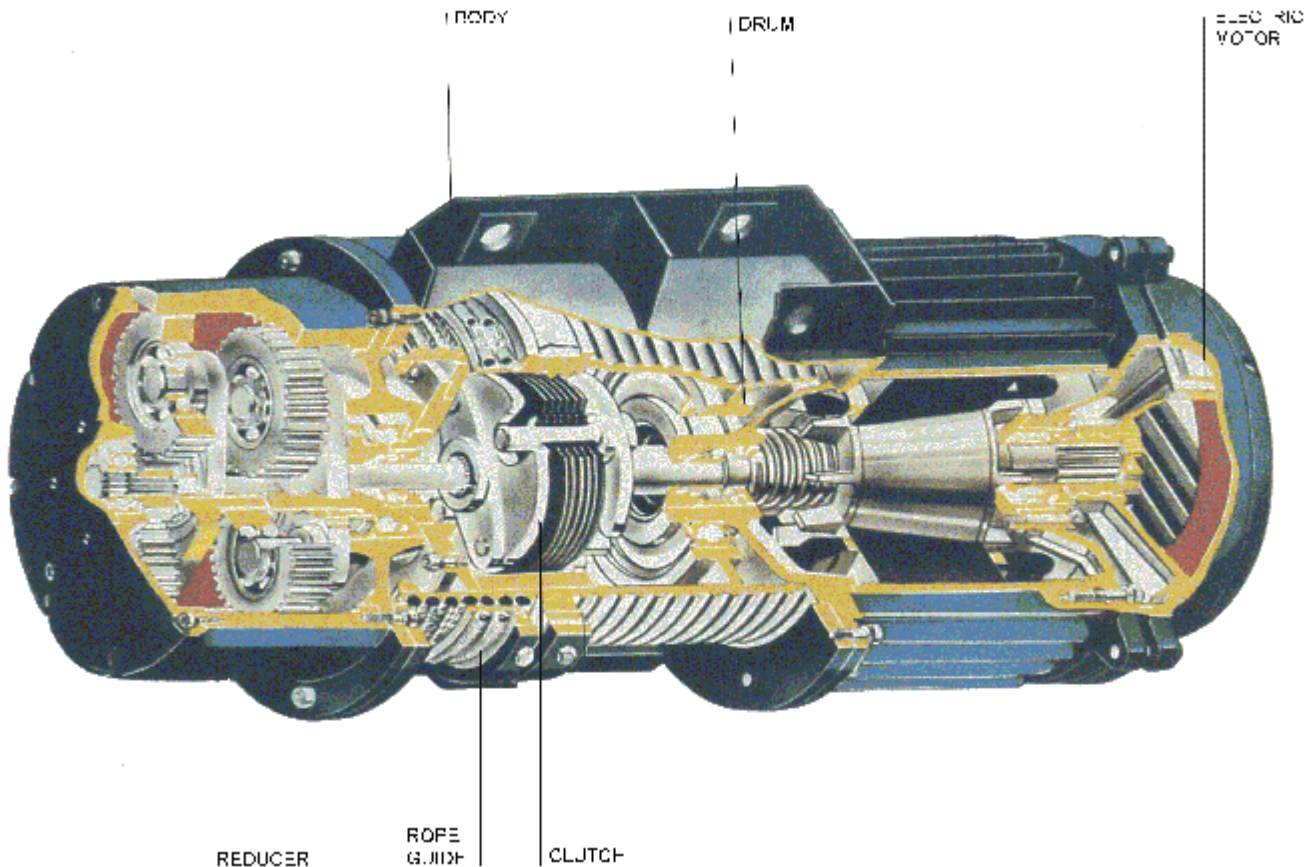
# ELECTRIC WIRE ROPE HOISTS Type T and BT



**PODEM GABROVO Ltd.**

HOISTS & CRANE COMPONENTS

[www.podem-gabrovo.com](http://www.podem-gabrovo.com)



The **T-series** rope electric hoists offers the customer new opportunities for efficient operation. Reliability, long life, convenience and safety of operation are intrinsic features of these products.

The wide range of capacities, lifting heights, lifting and travel wheels, different constructive modifications, various operation modes provide for enormous effective applicability of the series in nearly all industrial fields.

The modern technological and production equipment ensures high quality of details, units and machines. Hoist construction is based on the module principle and consists of separate blocks.

#### **HOIST MOTOR**

The cone rotor and built-in cone brake with forced cooling, situated out of the drum, provide for:

- more reliable braking system because of the less number of details;
- automatic brake release when the motor is started;
- good cooling of the brake; wear-proof friction material, quick and easy adjustments of the axial rotor stroke.

#### **GEARBOX**

A planetary, two-stage gearbox of the hoisting mechanism, situated out of the drum. All gearings operate in oil bath and are worked out from high-grade heat-treated steel. It is notable for its compactness, low noise level, high efficiency and reliability.

#### **FLEXIBLE COUPLING**

The clutch transmits the torque of the electric motor with minimum axial resistance. It is notable for its simple construction and reliability.

#### **DRUM WITH ROPE GUIDE**

The drum is located by roll bearings on the front flanges of the electric motor and the reducer. The rope guide provides for the proper winding and unwinding of the rope, for maximum vertical rope deviation  $\pm 4^\circ$  and actuates the end limit switches.

#### **HOOK BLOCK**

The unit is in full compliance with the latest international requirements for reliability and safe operation - FEM and ISO.

#### **BODY**

The bearing body is made from welded sheet iron and is of sufficient hardness. At both sides the electric motor and the reducer are located as well as the trolley when the hoist is equipped with one.

#### **MONO-RAIL TROLLEY**

The electric hoists are equipped with electric trolleys, available in two variants - for normal headroom, where the hoisting mechanism is under the monorail pathway and for low headroom, where the hoisting mechanism is situated beside the railway. The trolleys are driven by a plain two-stage reducer. The flanged travel wheels are mounted on ball bearings. The trolleys are equipped with anti-fall and anti-derailing systems.

#### **LOAD LIMITER**

All hoists are equipped with a load limiting device with 1 or 2 intervention thresholds. Consisting of a sensitive and reliable electromechanical system with pins and pre-calibrated springs, acting on a microswitch which operates on the auxiliary circuit of the lifting control contactor, it works as a safety device should the hoist happen to operate in conditions exceeding the overload limits as laid down by the EC Directives

#### **ROPE**

The rope is of the flexible steel stranded type and is chosen and dimensioned in accordance with ISO standards and FEM rules. The end of the rope is fixed by a wedge and in a bracket attachment, able to move in both directions.

#### **ELECTRIC EQUIPMENT**

The electric motors are controlled by contactors. The operative circuit, powered with low voltage (42V generally), contains the end limit switches for upper and lower hook position. The contactors and transformer are situated in a special electrical panel, mounted parallelly to the body, and the end limit switches are in the terminal box of the electric motor.

# T Type Electric Rope Hoists

## EXPLANATION OF MODEL AND CONSTRUCTION TYPES

12	T	2	MP	01	2	1	2	M	C	K								
										K	- power supply	- cable						
										T	-	- trolley						
											-	- second brake	- no					
										C	-	- yes						
											-	- lifting speed	- one					
										M	-	- two						
											-	- traveling speed (m/m)	- no	-				
											2	-	- 20	- without brake				
											3	-	- 32	- with brake				
											4	-	- 8	- with brake				
											5	-	- 10	- with brake				
											6	-	- 20	- with brake				
											7	-	- 12	- with brake				
											8	-	- 15	- with brake				
											11	-	- 12/4	- with brake				
											12	-	- 15/5	- with brake				
											13	-	- 20/6	- with brake				
											14	-	- 32/10	- with brake				
											1	--reeving--	-	1/1	2/1	3/1	4/1	
											1	- lifting height (m)	H1	12	6	-	-	
											2	-	H2	18	9	-	5	
											3	-	H3	24	12	9	6	
											4	-	H4	36	18	12	9	
											5	-	H5	48	24	-	11	
											6	-	H6	60	30	-	-	
											7	-	H7	72	36	-	-	
											2	--reeving--	-	1/1	2/1	3/1	4/1	
											2	- Capacity (kg)	-	250	500	-	1000	
											3	-	-	500	1000	-	2000	
											4	-	-	1000	2000	-	4000	
											5	-	-	1600	3200	-	6300	
											6	-	-	2500	5000	-	10000	
											7	-	-	4000	8000	12500	16000	
											01	- fixed on feet	- 2/1					
											02	- fixed on pins	- 2/1					
											08	- with push trolley	- 2/1	- standart headroom				
											09	- with hand trolley	- 2/1	- standart headroom				
											10	- with electric trolley	- 2/1	- standart headroom				
											17	- fixed on feet	- 1/1					
											27	- fixed on pins	- 3/1					
											31	- fixed on feet	- 3/1					
											33	- with electric trolley	- 3/1	- standart headroom				
											35	- fixed on feet	- 4/1					
											36	- fixed on pins	- 4/1					
											39	- with electric trolley	- 4/1	- standart headroom				
											44	- with hand trolley	- 2/1	- standart headroom				
											45	- with electric trolley	- 2/1	- short headroom				
											51	- fixed on feet	- 2/2					
											52	- fixed on feet	- 2/2					
											78	- with electric trolley	- 4/1	- short headroom				
											-	- climatic execution	- standart N II					
											T II	-	- tropical T II					
											F II	-	- for low temperatures F II					
											C	-	- for chemical surroundings					
											MP	-	- seaworthy					
											-	--reeving--	1/1	2/1	3/1	4/1		
											-	- lifting speed (m/min)	V1	16	8	5.5	4	
											2*	-	V2	24	12	-	-	
											3*	-	V3	32	16	-	-	
											T	- "T" type rope hoist	- standart execution					
											BT	-	- explosion - proof					
											TK	-	- with reeving 4/2					
											DT	-	- remote kontrol					
											11	- latch key						
											12	- termal protection						
											13	- latch key + termal protection						
											42	- load limiter						
											43	- latch key + load limiter						
											44	- termal protection + load limiter						
											45	- latch key + termal protection + load limiter						

\* fill in as indice, for example T<sub>2</sub>

# ELECTRIC WIRE ROPE HOISTS TYPE "T" SELECTION CRITERIA

To choose the right hoist the following criteria should be taken into account:

1. What will be the maximum loading capacity?
2. What will be the maximum lifting height?
3. What hoisting speed is to be employed?
4. Will an auxiliary reduced lifting speed be required?
5. What will the operational conditions be?
6. What will the travelling speed will be, if required?

The type of the hoists is to be defined in accordance with the load spectrum, the average operating time per day in hours, the loading capacity and the reeving.

### SELECTION EXAMPLE:

Loading capacity		- 3200 kg
Average lifting path of the hook	[H]	- 3 m
Hoisting speed	[V]	- 8 m/min
Reeving		- 2/1
Load spectrum		- "medium"
Cycles per hour	[N]	- 30
Average operating time per day	[T]	- 8 hours

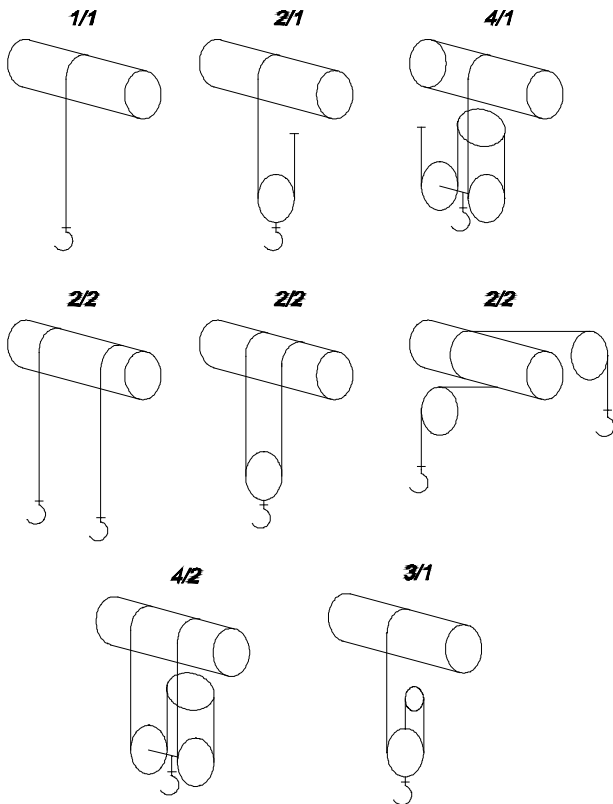
The average operating time per day of the hoist is to be calculated in the following manner:

$$T_m = \frac{2 \times H \times N \times T}{60 \times V} = \frac{2 \times 3 \times 30 \times 8}{60 \times 8} = 3 \text{ hours}$$

For the "medium" load spectrum and average operating time per day of 3 hours the group "2m" is shown in table "LOAD SPECTRUM-CLASS OF OPERATING TIME"

For loading capacity of 3200 kg and 2/1-reeving the type of the hoist T ...5... is shown in table "TYPE SELECTION".

LOAD SPECTRUM (Duty operation mode) DEFINITION			CLASS OF OPERATING TIME average operating time per day Tm in hours			
LIGHT	Mechanism, usually subject to very small loads and in exceptional cases only to maximum loads		2-4	4-8	8-16	>16
MEDIUM	Mechanism, usually subject to small loads but rather often to maximum loads		1-2	2-4	4-8	8-16
HEAVY	Mechanism, usually subject to medium loads but frequently to maximum loads		0.5-1	1-2	2-4	4-8
VERY HEAVY	Mechanism, usually subject to maximum or almost maximum loads		0.25-0.5	0.5-1	1-2	2-4
<b>GROUP – DIN 15 020/FEM 9.511</b>			1A m	2 m	3 m	4 m
<b>GROUP – ISO 4301</b>			M4	M5	M6	M7



TYPE SELECTION						
CAPACITY - KG				GROUP		
REEVING				DIN 15020/FEM9.511		
1/1	2/1	3/1	4/1	2m	3 m	4m
160	320		-			T..2..
200	400		-		T..2..	
250	500		-	T..2..		
320	630		1250			T..3..
400	800		1600		T..3..	
500	1000		2000	T..3..		
630	1250		2500			T..4..
800	1600		3200		T..4..	
1000	2000		4000	T..4..		T..5..
1250	2500		5000		T..5..	
1600	3200		6300	T..5..		T..6..
2000	4000		8000		T..6..	
2500 *	5000	8000**	10000	T..6..		T..7..
-	6300	10000	12500		T..7..	
-	8000	12500	16000	T..7..		

\* - for type T..6... only  
\*\* - for type T..7... only

LOAD SPECTRUM						AVERAGE OPERATING TIME PER DAY IN HOURS ( TOTAL OPERATING TIME IN HOURS)							
1. LIGHT						2-4(6300)		4-8(12500)		8-16(25000)		>16 (50000)	
2. MEDIUM						1-2(3200)		2-4(6300)		4-8(12500)		8-16(25000)	
3. HEAVY						0.5-1 (1600)		1-2(3200)		2-4(6300)		4-8(12500)	
4. VERY HEAVY						0.25-0.5 (800)		0.5-1 (1600)		1-2(3200)		2-4(6300)	
DURATION SWITCHING ON % (for lifting mechanism)						30		40		50		60	
CYCLES PER HOUR						180		240		300		360	
GROUP		FEM 9.511				1Am		2 m		3 m		4 m	
		ISO 4301				M4		M5		M6		M7	
REEVING						TYPE							
1/1	2/2	2/1	4/2	3/1	4/1								
CAPACITY, KG													
160	320	-	630							T 2	T 2	M	
										T <sub>2</sub> 2	T <sub>2</sub> 2	M	
										T <sub>3</sub> 2	T <sub>3</sub> 2	M	
200	400	-	800					T 2	T 2	M			
								T <sub>2</sub> 2	T <sub>2</sub> 2	M			
								T <sub>3</sub> 2	T <sub>3</sub> 2	M			
250	500	-	1000			T 2	T 2	M					
						T <sub>2</sub> 2	T <sub>2</sub> 2	M					
						T <sub>3</sub> 2	T <sub>3</sub> 2	M					
320	630	-	1250							T 3	T 3	M	
										T <sub>2</sub> 3	T <sub>2</sub> 3	M	
										T <sub>3</sub> 3	T <sub>3</sub> 3	M	
										TK 3	TK 3	M	
										TK <sub>2</sub> 3	TK <sub>2</sub> 3	M	
400	800	-	1600					T 3	T 3	M			
								T <sub>2</sub> 3	T <sub>2</sub> 3	M			
								T <sub>3</sub> 3	T <sub>3</sub> 3	M			
								TK 3	TK 3	M			
								TK <sub>2</sub> 3	TK <sub>2</sub> 3	M			
500	1000	-	2000			T 3	T 3	M					
						T <sub>2</sub> 3	T <sub>2</sub> 3	M					
						T <sub>3</sub> 3	T <sub>3</sub> 3	M					
						TK 3	TK 3	M					
						TK <sub>2</sub> 3	TK <sub>2</sub> 3	M					
630	1250	-	2500							T 4	T 4	M	
										T <sub>2</sub> 4	T <sub>2</sub> 4	M	
										T <sub>3</sub> 4	T <sub>3</sub> 4	M	
										TK 4	TK 4	M	
										TK <sub>2</sub> 4	TK <sub>2</sub> 4	M	
800	1600	-	3200					T 4	T 4	M			
								T <sub>2</sub> 4	T <sub>2</sub> 4	M			
								T <sub>3</sub> 4	T <sub>3</sub> 4	M			
								TK 4	TK 4	M			
								TK <sub>2</sub> 4	TK <sub>2</sub> 4	M			
1000	2000	-	4000			T 4	T 4	M			T 5	T 5	M
						T <sub>2</sub> 4	T <sub>2</sub> 4	M			T <sub>2</sub> 5	T <sub>2</sub> 5	M
						T <sub>3</sub> 4	T <sub>3</sub> 4	M			T <sub>3</sub> 5	T <sub>3</sub> 5	M
						TK 4	TK 4	M			TK 5	TK 5	M
						TK <sub>2</sub> 4	TK <sub>2</sub> 4	M			TK <sub>2</sub> 5	TK <sub>2</sub> 5	M
1250	2500	-	5000					T 5	T 5	M			
								T <sub>2</sub> 5	T <sub>2</sub> 5	M			
								T <sub>3</sub> 5	T <sub>3</sub> 5	M			
								TK 5	TK 5	M			
								TK <sub>2</sub> 5	TK <sub>2</sub> 5	M			
1600	3200	-	6300			T 5	T 5	M			T 6	T 6	M
						T <sub>2</sub> 5	T <sub>2</sub> 5	M			T <sub>2</sub> 6	T <sub>2</sub> 6	M
						T <sub>3</sub> 5	T <sub>3</sub> 5	M			T <sub>3</sub> 6	T <sub>3</sub> 6	M
						TK 5	TK 5	M			TK 6	TK 6	M
						TK <sub>2</sub> 5	TK <sub>2</sub> 5	M			TK <sub>2</sub> 6	TK <sub>2</sub> 6	M
2000	4000	-	8000					T 6	T 6	M			
								T <sub>2</sub> 6	T <sub>2</sub> 6	M			
								T <sub>3</sub> 6	T <sub>3</sub> 6	M			
								TK 6	TK 6	M			
								TK <sub>2</sub> 6	TK <sub>2</sub> 6	M			
2500	5000	8000	10000			T 6	T 6	M			T277	T277	M
						T <sub>2</sub> 6	T <sub>2</sub> 6	M			T317	T317	M
						T <sub>3</sub> 6	T <sub>3</sub> 6	M	T 7	T 7	M		
						TK 6	TK 6	M	TK 7	TK 7	M		
						TK <sub>2</sub> 6	TK <sub>2</sub> 6	M			T337	T337	M
3200	6300	10000	12500			T 7	T 7	M	T277	T277	M		
						TK 7	TK 7	M	T317	T317	M		
									T337	T337	M		
4000	8000	12500	16000	T 7	T 7	M							
				TK 7	TK 7	M	T277	T277	M				
							T317	T317	M				
							T337	T337	M				

# Technical specifications of the electric hoists

## T...2... Basic parameters

Type	Reev-ing	Lifting height, m							Lifting speed, m/min						Rated power of the lifting electric motor kw <sup>4)</sup>		Rated power of the trolley electric motor kw <sup>4)</sup>		
									V1		V2		V3						
		H1	H2	H3	H4	H5	H6	H7	T...	T...M	T...	T...M	T...	T...M					
T172..	1/1	12	18	24	36	48	60	70	16	4/16	24	4/24	-	-	V1	T...	0.75	20 m/min	0.12
			-	-	36	48	60	70	-		-	-	32	4/32		T...M	0.15/0.75		
T012.. T022..	2/1	6	9	12	18	24	30	35	8	2/8	12	2/12	-	-	V2	T <sub>2</sub> ...	1.1	32 m/min	0.18
			-	-	18	23	30	35	-	-	-	-	16	2/16		T <sub>2</sub> ...M	0.15/1.1		
T092.. <sup>1)</sup> T102..	2/1	6	9	12	18	24	30	35	8	8/2	12	2/12	-	-	V3	T <sub>3</sub> ...	4.5	20 m/min	0.18
			-	-	18	23	-	-	-	-	-	-	16	2/16		T <sub>3</sub> ...M	0.7/4.5		
			-	-	-	-	30	35	-	-	-	-	16	2/16					
T442.. <sup>1)</sup> T452..	2/1	5	8	11	-	-	-	-	8	2/8	12	2/12	-	-	Travel speed <sup>2)</sup> m/min	Railway profile width min., mm <sup>3)</sup>	Curve radius min., m		
															20	32	90	1.5	
																	130	2.5	
																	90	1.5	
																	110	2.0	

1) - Hand pushed

2) - Other travel speeds available: 8; 10; 12; 15; 4/12; 5/15; 6/20; 10/32 m/min;

3) - Maximum railway profile width - 300 mm

4) - Revolutions of the lifting electric motors: at V1 - 910; V2 - 1360 min<sup>-1</sup>; V3 - 1400 min<sup>-1</sup>.

Revolutions of the trolley electric motors: 20 m/min - 870min<sup>-1</sup>; 32 m/min - 1440 min<sup>-1</sup>

## Weight, kg <sup>1), 2)</sup>

Lifting height m	T172...;T012...;T022...				T092... T102...				T442... T452...	
	T..	T..M	T <sub>3</sub> ..	T <sub>3</sub> ..M	T..	T..M	T <sub>3</sub> ..	T <sub>3</sub> ..M	T..	T..M
	T <sub>2</sub> ..	T <sub>2</sub> ..M			T <sub>2</sub> ..	T <sub>2</sub> ..M			T <sub>2</sub> ..	T <sub>2</sub> ..M
H1	95	113	-	-	129	147	-	-	195	213
H2	100	118	-	-	135	153	-	-	215	233
H3	105	123	-	-	138	156	-	-	235	253
H4	119	137	226	272	208	226	317	363	-	-
H5	128	146	244	290	218	236	335	381	-	-
H6	250	297	251	297	348	395	349	395	-	-
H7	273	320	274	320	371	418	372	418	-	-

1) - The second brake increases the weight by 5 kg.

2) - For travel speeds as per 2) (see above) the weight increases by up to 5 %.

### T...3... Basic parameters

Type	Reev- ing	Lifting height, m							Lifting speed m, min						Rated power of the lifting electric motor kw <sup>4)</sup>			Rated power of the trolley electric motor, kw <sup>4)</sup>		
		H1	H2	H3	H4	H5	H6	H7	V1		V2		V3		V1	T... T...M	1.5 0.3/1.5	20 m/min	0.12	
									T...	T...M	T...	T...M	T...	T...M						T...
T173..	1/1	12	18	24	36	48	60	72	16	4/16	24	4/24	-	-	V2	T <sub>2</sub> ... T <sub>2</sub> ...M	2.3 0.3/2.2	32	4/32	0.18
		-	-	-	36	48	60	72	-	-	-	-	32	4/32						
T013.. T023..	2/1	6	9	12	18	24	30	36	8	2/8	12	2/12	-	-	V3	T <sub>3</sub> ... T <sub>3</sub> ...M	4.5 0.7/4.5	32 m/min	0.18	
		-	-	-	18	24	30	36	-	-	-	-	16	2/16						
TK013.. TK023..	4/2	-	-	5	9	12.5	-	-	8	2/8	12	2/12	-	-						
T353.. T363..	4/1	-	5	6	-	-	-	-	4	1/4	6	1/6	-	-						
T513.. T523..	2/2	-	6	10	18	25	-	-	16	4/16	12	4/24	-	-	Travel speed <sup>2)</sup> m/min	Railway profile width min., mm <sup>3)</sup>	Curve radius min., m			
T093.. <sup>1)</sup> T103..	2/1	6	9	12	18	24	30	36	8	8/2	12	2/12	-	-	20	32	90	1.5		
		-	-	-	18	-	-	-	-	-	-	-	16	2/16			130	2.5		
		-	-	-	-	24	30	36	-	-	-	-	-	-			90	1.5		
T443.. <sup>1)</sup> T453..	2/1	5	8	11	-	-	-	-	8	2/8	12	2/12	-	-	110	2.0				
T393..	4/1	-	5	6	-	-	-	-	4	1/4	6	1/6	-	-	130	2.5				
T783..	4/1	-	-	6	9	-	-	-	4	1/4	6	1/6	-	-	150	2.5				
TK103..	4/2	-	-	5	9	12,5	-	-	8	2/8	12	2/12	-	-	90	1,5				

1) - Hand pushed

2) - Other travel speeds available: 8; 10; 12; 15; 4/12; 5/15; 6/20; 10/32 m min;

3) - Maximum railway profile width - 300 mm

4) - Revolutions of the lifting electric motors: at V1 - 910; V2 - 1300 min<sup>-1</sup>; V3 - 1400 min<sup>-1</sup>.

Revolutions of the trolley electric motors: 20 m/min - 820min<sup>-1</sup>; 32 m/min - 1440 min<sup>-1</sup>

### Weight, kg <sup>1), 2)</sup>

Lifting height m	T173...;T013...;T023...				TK013... TK023...		T353...		T363...		T513... T523...		T093... T103...				T393...		T443... T453...		T783...		TK103...	
	T..	T..M	T <sub>3</sub> ..	T <sub>3</sub> ..M	T..	T..M	T..	T..M	T..	T..M	T..	T..M	T..	T..M	T <sub>3</sub> ..	T <sub>3</sub> ..M	T..	T..M	T..	T..M	T..	T..M	T..	T..M
	T <sub>2</sub> ..	T <sub>2</sub> ..M			T <sub>2</sub> ..	T <sub>2</sub> ..M	T <sub>2</sub> ..	T <sub>2</sub> ..M	T <sub>2</sub> ..	T <sub>2</sub> ..M	T <sub>2</sub> ..	T <sub>2</sub> ..M	T <sub>2</sub> ..	T <sub>2</sub> ..M	T <sub>3</sub> ..	T <sub>3</sub> ..M	T <sub>2</sub> ..	T <sub>2</sub> ..M	T <sub>2</sub> ..	T <sub>2</sub> ..M	T <sub>2</sub> ..	T <sub>2</sub> ..M	T <sub>2</sub> ..	T <sub>2</sub> ..M
H1	107	130	-	-	-	-	-	-	-	-	-	-	137	160	-	-	-	-	220	243	-	-	-	-
H2	115	138	-	-	-	-	153	176	191	214	110	133	142	165	-	-	276	299	240	263	-	-	-	-
H3	124	147	-	-	148	170	164	187	202	225	120	143	152	175	-	-	288	309	260	283	320	343	154	177
H4	137	160	247	293	160	182	-	-	-	-	135	158	218	241	330	376	-	-	-	-	355	378	167	190
H5	149	172	263	309	172	193	-	-	-	-	148	171	232	255	347	393	-	-	-	-	-	-	179	202
H6	286	333	287	333	-	-	-	-	-	-	-	-	375	422	376	422	-	-	-	-	-	-	-	-
H7	306	353	307	353	-	-	-	-	-	-	-	-	395	442	396	442	-	-	-	-	-	-	-	-

1) - The second brake increases the weight by 5 kg.

2) - For travel speeds as per 2) (see above) the weight increases by up to 5 %.

### T...4... Basic parameters

Type	Reev-ing	Lifting height, m							Lifting speed, m/min						Rated power of the lifting electric motor kw <sup>4)</sup>			Rated power of the trolley electric motor, kw <sup>4)</sup>							
		H1	H2	H3	H4	H5	H6	H7	V1		V2		V3		V1	T... T...M	3,0 0.7/3.0	20 m/min	0.25						
									T...	T...M	T...	T...M	T...	T...M											
T174..	1/1	12	18	24	36	48	60	72	16	4/16	24	4/24	-	-	V2	T <sub>2</sub> ... T <sub>2</sub> ...M	4,5 0.7/4.5	32 m/min	0.37						
		-	-	-	-	48	60	72	-	-	-	-	32	4/32											
T014.. T024..	2/1	6	9	12	18	24	30	36	8	2/8	12	2/12	-	-	V3	T <sub>3</sub> ... T <sub>3</sub> ...M	12 1.7/12.5	32 m/min	0.37						
		-	-	-	-	24	30	36	-	-	-	-	16	2/16											
TK014.. TK024..	4/2	-	-	4.5	9	13	-	-	8	2/8	12	2/12	-	-											
T354.. T364..	4/1	-	-	6	9	-	-	-	4	1/4	6	1/6	-	-											
T514.. T524..	2/2	-	5	9	18	26	-	-	16	4/16	12	4/24	-	-	20	32	Travel speed <sup>2)</sup> m/min	Railway profile width min., mm <sup>3)</sup>	Curve radius min., m						
T094.. <sup>1)</sup> T104..	2/1	6	9	12	18	24	30	36	8	8/2	12	2/12	-	-						130	2.5				
T444.. <sup>1)</sup> T454..		2/1	5	8	11	-	-	-	-	8	2/8	12	2/12	-								-	130	2.5	
T394..	4/1	-	-	6	9	-	-	-	4	1/4	6	1/6	-	-								220			2.5
T784..	4/1	-	-	6	9	-	-	-	4	1/4	6	1/6	-	-											
TK104..	4/2	-	-	4.5	9	13	-	-	8	2/8	12	2/12	-	-											

1) - Hand pushed

2) - Other travel speeds available: 8; 10; 12; 15; 4/12; 5/15; 6/20; 10/32 m/min;

3) - Maximum railway profile width - 300 mm

4) - Revolutions of the lifting electric motors: at V1 - 920; V2 - 1400 min<sup>-1</sup>; V3 - 1430 min<sup>-1</sup>.

Revolutions of the trolley electric motors: 20 m/min - 870min<sup>-1</sup>; 32 m/min - 1250 min<sup>-1</sup>

### Weight, kg <sup>1), 2)</sup>

Lifting height m	T174...;T014...;T024...				TK014... TK024...		T354...		T364...		T514... T524...		T094... T104...				T394...		T444... T454...		T784...		TK104...	
	T..	T..M	T <sub>3</sub> ..	T <sub>3</sub> ..M	T..	T..M	T..	T..M	T..	T..M	T..	T..M	T <sub>3</sub> ..	T <sub>3</sub> ..M	T..	T..M	T..	T..M	T..	T..M	T..	T..M	T..	T..M
	T <sub>2</sub> ..	T <sub>2</sub> ..M			T <sub>2</sub> ..	T <sub>2</sub> ..M	T <sub>2</sub> ..	T <sub>2</sub> ..M	T <sub>2</sub> ..	T <sub>2</sub> ..M	T <sub>2</sub> ..	T <sub>2</sub> ..M	T <sub>2</sub> ..	T <sub>2</sub> ..M			T <sub>2</sub> ..	T <sub>2</sub> ..M	T <sub>2</sub> ..	T <sub>2</sub> ..M	T <sub>2</sub> ..	T <sub>2</sub> ..M	T <sub>2</sub> ..	T <sub>2</sub> ..M
H1	207	253	-	-	-	-	-	-	-	-	-	-	290	337	-	-	-	-	420	467	-	-	-	-
H2	222	268	-	-	-	-	-	-	-	-	210	257	305	352	-	-	-	-	450	497	-	-	-	-
H3	232	278	-	-	260	305	315	361	376	422	225	272	315	362	-	-	460	507	475	522	510	557	547	361
H4	267	313	-	-	294	340	344	390	412	458	265	312	459	506	-	-	607	654	-	-	570	617	350	396
H5	292	338	486	541	315	360	-	-	-	-	290	337	484	531	684	739	-	-	-	-	-	-	375	421
H6	526	581	526	581	-	-	-	-	-	-	-	-	691	786	731	786	-	-	-	-	-	-	-	-
H7	546	601	546	601	-	-	-	-	-	-	-	-	711	806	751	806	-	-	-	-	-	-	-	-

1) - The second brake increases the weight by 5 kg.

2) - For travel speeds as per 2) (see above) the weight increases by up to 5 %.



### T...5... Basic parameters

Type	Reev- ing	Lifting height, m							Lifting speed, m/min						Rated power of the lifting electric motor kw <sup>4)</sup>			Rated power of the trolley electric motor, kw <sup>4)</sup>						
		H1	H2	H3	H4	H5	H6	H7	V1		V2		V3		V1	T... T...M	4,5 1.0/4.8	20 m/min	0.25					
									T...	T...M	T...	T...M	T...	T...M						T...	T...M			
T175..	1/1	12	18	24	36	48	60	72	16	4/16	24	4/24	-	-	V2	T <sub>2</sub> ... T <sub>2</sub> ...M	7,5 1.0/7.5	32	4/32	32 m/min	0.37			
		-	-	-	36	48	60	72	-	-	-	-	32	4/32										
T015.. T025..	2/1	6	9	12	18	24	30	36	8	2/8	12	2/12	-	-	V3	T <sub>3</sub> ... T <sub>3</sub> ...M	12 1.7/12.5	16	2/16	32 m/min	0.37			
		-	-	-	18	24	30	36	-	-	-	-	16	2/16										
TK015.. TK025..	4/2	-	-	4	7.5	11	-	-	8	2/8	12	2/12	-	-										
T355.. T355..	4/1	-	-	6	9	-	-	-	4	1/4	6	1/6	-	-										
T515.. T525..	2/2	-	5	8	15	22	-	-	16	4/16	12	4/24	-	-	Travel speed <sup>2)</sup> m/min	Railway profile width min., mm <sup>3)</sup>	Curve radius min., m							
T095.. <sup>1)</sup> T105..	2/1	6	9	12	18	24	30	36	8	8/2	12	2/12	-	-				20	32	130	2.5			
T445.. <sup>1)</sup> T455..	2/1	5	8	11	-	-	-	-	8	2/8	12	2/12	-	-	130	2.5								
T395..	4/1	-	-	6	-	-	-	-	4	1/4	6	1/6	-	-			130					3.5		
		-	-	9	-	-	-	-																
T785..	4/1	-	-	6	9	-	-	-	4	1/4	6	1/6	-	-	220	3.5								
TK105..	4/2	-	-	4	7.5	11	-	-	8	2/8	12	2/12	-	-			130					2.5		

1) - Hand pushed

2) - Other travel speeds available: 8; 10; 12; 15; 4/12; 5/15; 6/20; 10/32 m/min;

3) - Maximum railway profile width - 300 mm

4) - Revolutions of the lifting electric motors: at V1 - 920; V2 - 1380 min<sup>-1</sup>; V3 - 1430 min<sup>-1</sup>.

Revolutions of the trolley electric motors: 20 m/min - 870min<sup>-1</sup>; 32 m/min - 1250 min<sup>-1</sup>

### Weight, kg <sup>1), 2)</sup>

Lifting height m	T175...;T015...;T025...				TK015... TK025...		T355...		T365...		T515... T525...		T095... T105...				T395...		T445... T455...		T785...		TK105...	
	T..	T..M	T <sub>3</sub> ..	T <sub>3</sub> ..M	T..	T..M	T..	T..M	T..	T..M	T..	T..M	T <sub>3</sub> ..	T <sub>3</sub> ..M	T..	T..M	T..	T..M	T..	T..M	T..	T..M	T..	T..M
	T <sub>2</sub> ..	T <sub>2</sub> ..M			T <sub>2</sub> ..	T <sub>2</sub> ..M	T <sub>2</sub> ..	T <sub>2</sub> ..M	T <sub>2</sub> ..	T <sub>2</sub> ..M	T <sub>2</sub> ..	T <sub>2</sub> ..M	T <sub>2</sub> ..	T <sub>2</sub> ..M	T <sub>2</sub> ..	T <sub>2</sub> ..M	T <sub>2</sub> ..	T <sub>2</sub> ..M	T <sub>2</sub> ..	T <sub>2</sub> ..M	T <sub>2</sub> ..	T <sub>2</sub> ..M	T <sub>2</sub> ..	T <sub>2</sub> ..M
H1	250	305	-	-	-	-	-	-	-	-	-	-	335	390	-	-	-	-	485	540	-	-	-	-
H2	265	320	-	-	-	-	-	-	-	-	255	310	350	405	-	-	-	-	520	575	-	-	-	-
H3	280	335	-	-	305	315	404	459	467	522	270	325	365	420	-	-	595	650	545	600	615	670	390	445
H4	320	375	490	545	342	352	441	496	511	566	300	355	514	569	686	741	705	760	-	-	675	730	427	482
H5	350	405	535	590	370	380	-	-	-	-	330	385	544	599	731	786	-	-	-	-	-	-	455	510
H6	565	620	565	620	-	-	-	-	-	-	-	-	761	816	761	816	-	-	-	-	-	-	-	-
H7	590	645	590	645	-	-	-	-	-	-	-	-	786	841	786	841	-	-	-	-	-	-	-	-

1) - The second brake increases the weight by 5 kg.

2) - For travel speeds as per 2) (see above) the weight increases by up to 5 %.

### T...6... Basic parameters

Type	Reev-ing	Lifting height, m							Lifting speed, m/min						Rated power of the lifting electric motor kw <sup>4)</sup>			Rated power of the trolley electric motor, kw <sup>4)</sup>	
		H1	H2	H3	H4	H5	H6	H7	V1		V2		V3		V1	T... T...M	8.0 1.7/8.0	20 m/min	0.37
									T...	T...M	T...	T...M	T...	T...M					
T176..	1/1	12	18	24	36	48	-	72	16	4/16			-	-	V1	T... T...M	8.0 1.7/8.0	20 m/min	0.37
		12	18	24	36	48	-	-	-	-	24	4/24	-	-					
		-	-	-	36	48	-	72	-	-	-	-	32	4/32	V2	T <sub>2</sub> ... T <sub>2</sub> ...M	12 1.7/12.5	32 m/min	0.55
T016.. T026..	2/1	6	9	12	18	24	-	36	8	2/8	-	-	-	-					
		6	9	12	18	24	-	-	-	-	12	2/12	-	-					
		-	-	-	18	24	-	36	-	-	-	-	16	2/16					
TK016.. TK026..	4/2	-	-	-	6.5	10	-	-	8	2/8	12	2/12	-	-					
T356.. T366..	4/1	-	-	6	9	11	-	-	4	1/4	6	1/6	-	-					
T516.. T526..	2/2	-	-	7	13	20	-	-	16	4/16	12	4/24	-	-	Travel speed <sup>2)</sup> m/min	Railway profile width min., mm <sup>3)</sup>	Curve radius min., m		
T096.. <sup>1)</sup> T106..	2/1	6	9	12	-	-	-	-	8	8/2	-	-	-	-	20	32	130	3.5	
		-	-	-	18	24	-	36										2.5	
		6	9	12	-	-	-	-	-	-	12	2/12	-	-				3.5	
		-	-	-	18	24	-	-										2.5	
		-	-	-	18	24	-	36										-	-
T446.. <sup>1)</sup> T456..	2/1	5	8	11	-	-	-	-	8	2/8	12	2/12	-	-	130	3.5			
T396..	4/1	-	-	6	9	11	-	-	4	1/4	6	1/6	-	-	130	3.5			
T786..	4/1	-	-	6	9	12	-	-	4	1/4	6	1/6	-	-	220	4.0			
TK106..	4/2	-	-	-	6.5	10	-	-	8	2/8	12	2/12	-	-	130	2.5			

1) - Hand pushed

2) - Other travel speeds available: 8; 10; 12; 15; 4/12; 5/15; 6/20; 10/32 m/min.

3) - Maximum railway profile width - 300 mm.

4) - Revolutions of the lifting electric motors: at V1 - 920; V2 - 1430 min<sup>-1</sup>; V3 - 1430 min<sup>-1</sup>.  
Revolutions of the trolley electric motors: 20 m/min - 870min<sup>-1</sup>; 32 m/min - 1250 min<sup>-1</sup>.

### Weight, kg <sup>1), 2)</sup>

Lifting height m	T176...;T016...; T026...			TK016... TK026...		T356...		T366...		T516... T526...		T096... T106...			T396...		T446... T456...		T786...		TK106...	
	T.. T <sub>2</sub> .. <sup>3)</sup>	T..M T <sub>2</sub> ..M	T <sub>3</sub> ..	T.. T <sub>2</sub> .. <sup>3)</sup>	T..M T <sub>2</sub> ..M	T.. T <sub>2</sub> .. <sup>3)</sup>	T..M T <sub>2</sub> ..M	T.. T <sub>2</sub> .. <sup>3)</sup>	T..M T <sub>2</sub> ..M	T.. T <sub>2</sub> .. <sup>3)</sup>	T..M T <sub>2</sub> ..M	T.. T <sub>2</sub> .. <sup>3)</sup>	T..M T <sub>2</sub> ..M	T <sub>3</sub> ..	T.. T <sub>2</sub> .. <sup>3)</sup>	T..M T <sub>2</sub> ..M	T.. T <sub>2</sub> .. <sup>3)</sup>	T..M T <sub>2</sub> ..M	T.. T <sub>2</sub> .. <sup>3)</sup>	T..M T <sub>2</sub> ..M	T.. T <sub>2</sub> .. <sup>3)</sup>	T..M T <sub>2</sub> ..M
H1	360	455	-	-	-	-	-	-	-	-	-	488	583	-	-	720	815	-	-	-	-	
H2	380	475	-	-	-	-	-	-	-	380	475	508	603	-	-	765	860	-	-	-	-	
H3	400	495	-	-	-	527	622	620	715	400	495	528	623	-	926	1021	800	895	875	970	-	-
H4	460	555	818	507	547	594	689	691	786	460	555	656	751	1018	997	1092	-	-	985	1080	635	675
H5	510	605	838	555	595	641	736	749	844	505	600	706	801	1038	1055	1150	-	-	1090	1190	683	723
H7	840	900	900	-	-	-	-	-	-	-	-	1040	1100	1100	-	-	-	-	-	-	-	-

1) - The second brake increases the weight by 5 kg.

2) - For travel speeds as per 2) (see above) the weight increases by up to 5 %.

3) - For modifications T<sub>2</sub>, the weight is 40 kg higher than modifications T.

### T...7... Basic parameters

Type	Reev- ing	Lifting heigh,t m							Lifting speed, m/min						Rated power of the lifting electric motor kw <sup>3)</sup>		Rated power of the trolley electric motor, kw <sup>3)</sup>		
									V1		V2		V3						
		H1	H2	H3	H4	H5	H6	H7	T...	T...M	T...	T...M	T...	T...M	V1	T... T...M	12.5 3/13	20 m/min 32 m/min	2 x 0.25 2 x 0.37
T017.. T027..	2/1	-	9	12	18	24	30	36	8	2/8	-	-	-	-					
TK017.. TK027..	4/2	-	-	-	6.5	10	13.5	17	8	2/8	-	-	-	-					
T277..	3/1	-	-	9	12	-	-	-	5.5	1.3/5.5	-	-	-	-	Travel speed <sup>1)</sup> m/min	Railway profile width min., mm <sup>2)</sup>	130	3.5	
T337..	3/1	-	-	9	12	-	-	-	5.5	1.3/5.5	-	-	-	-					
T357..	4/1	-	5	6	9	11	-	-	4	1/4	-	-	-	-					
T107..	2/1	-	9	12	18	24	30	36	8	8/2	-	-	-	-					
T317..	3/1	-	-	9	12	-	-	-	5.5	1.3/5.5	-	-	-	-					
T397..	4/1	-	5	6	9	11	-	-	4	1/4	-	-	-	-					
TK107..	4/2	-	-	-	-	10	13.5	17	8	2/8	-	-	-	-					

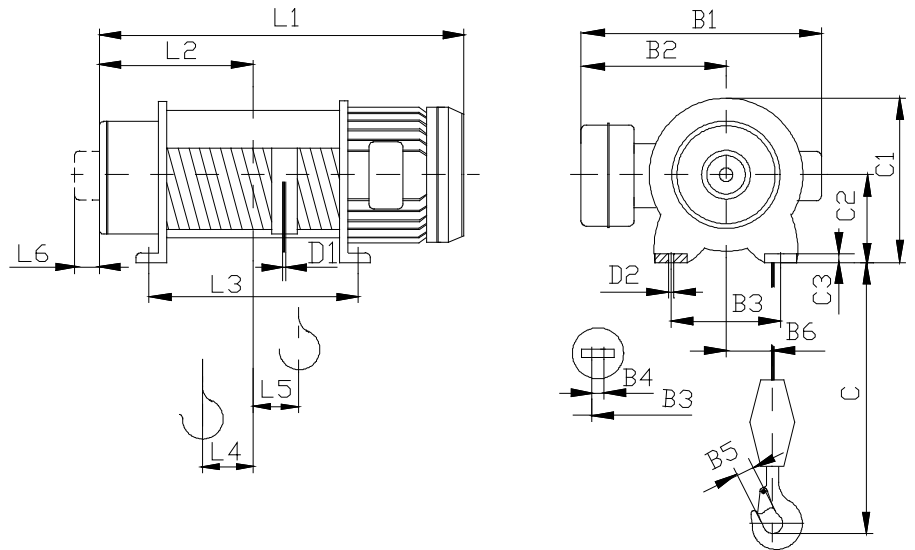
- 1) - Other travel speeds available: 8; 10; 12; 15; 4/12; 5/15; 6/20; 10/32 m/min;  
2) - Maximum railway profile width - 300 mm  
3) - Revolutions of the lifting electric motors: at V1 - 920  
Revolutions of the trolley electric motors: 20 m/min - 870min<sup>-1</sup>; 32 m/min - 1250 min<sup>-1</sup>

### Weight, kg <sup>1), 2)</sup>

Lifting height m	T017...; T027...		TK017...		T277... T337...		T357...		TK027		T107...		T317...		T397...		TK107...	
	T..	T..M	T..	T..M	T..	T..M	T..	T..M	T..	T..M	T..	T..M	T..	T..M	T..	T..M	T..	T..M
H2	660	720	-	-	-	-	804	864	847	927	988	1048	-	-	1154	1214	-	-
H3	700	760	-	-	800	860	860	920	951	1011	1036	1096	1217	1231	1211	1271	-	-
H4	765	825	817	878	865	925	938	998	1019	1079	1108	1168	1288	1302	1290	1350	1085	1146
H5	825	885	872	933	-	-	1010	1070	-	-	1175	1235	-	-	1364	1424	1140	1201
H6	880	940	924	983	-	-	-	-	-	-	1244	1304	-	-	-	-	1192	1251
H7	940	1000	983	1043	-	-	-	-	-	-	1314	1374	-	-	-	-	1251	1311

- 1) - The second brake increases the weight by 10 kg.  
2) - For travel speeds as per 2) (see above) the weight increases by up to 5 %.

T 17... - 1/1



DIMENSIONS, mm

TYPE		REEVING 1/1																																
		B1				B2	B3	B4	B5	B6	C				C1	C2	C3	D1	D2	L1				L2	L3	L4	L5	L6						
		T..	T..M	T2..	T2..M						T..	T..M	T2..	T2..M						T..	T..M	T2..	T2..M											
T 172.. T <sub>2</sub> 172..	H1																		640	680	640	680	280	320	74	90	75							
	H2																			730	770	730	770	325	410	119		135						
	H3	490	500	490	500	300	200	-		90									308	155	17		6	21	810	850		810	850	365	490	159	175	
	M4										28																							
	H5																																	
	H6																																	
	H7	575	600	575	600	380	270	-		125										400	200	22		26	1220	1285		1220	1285	560	804	294	311	
T 173.. T <sub>2</sub> 173..	H1																											75						
	H2																																	
	H3	490	505	490	505	300	200	-		90										308	155	17		8	21	810	850		810	850	355	470	152	162
	H4										34																							
	H5																																	
	H6																																	
	H7	575	600	575	600	380	270	-		126										400	200	22		26	1420	1485	1420		1485	665	1004	395	410	
T 174.. T <sub>2</sub> 174..	H1																											83						
	H2																																	
	H3	575	600	575	600	380	270	-		128										400	200	22		11	26	1015	1080		1015	1080	460	604	195	207
	H4										40																							
	H5																																	
	H6																																	
	H7	640	685	690	685	430	330	-		158										495	235	26		30	1525	1615	1560		1615	700	1070	415	428	
T 175.. T <sub>2</sub> 175..	H1																											83						
	H2																																	
	H3	575	620	575	620	380	270	-		130										400	200	22		13	26	1080	1165		1110	1165	485	654	221	233
	H4										45																							
	H5																																	
	H6																																	
	H7	640	685	690	685	430	330	-		159										495	235	26		30	1630	1720	1665		1720	750	1175	469	480	
T 176.. T <sub>2</sub> 176..	H1																											100						
	H2																																	
	H3	640	685	690	685	430	330	-		160										496	250	26		16	30	1100	1190		1135	1190	485	650	204	216
	H4										50																							
	H5																																	
	H6																																	
	H7	720	740	-	-	470	460	82		179										585	300	32		28	1920	1975	-		-	900	1433	554	572	

**DIMENSIONS, mm**

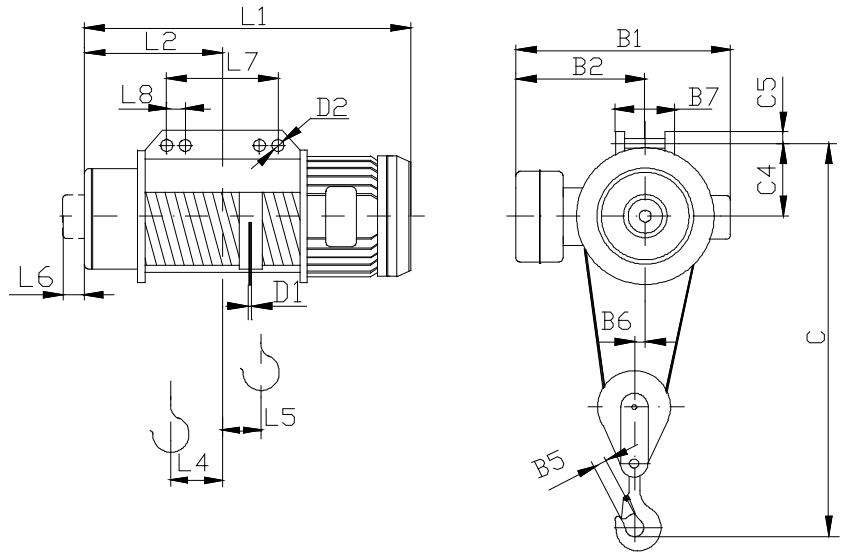
TYPE		REEVING 1/1																			
		B1		B2	B3	B4	B5	B6	C	C1	C2	C3	D1	D2	L1		L2	L3	L4	L5	L6
		T <sub>3..</sub>	T <sub>3..M</sub>												T <sub>3..</sub>	T <sub>3..M</sub>					
T <sub>3</sub> 172..	H4	575	600	380	270	-	28	125	430	400	200	22	6	26	1020	1085	460	604	194	211	83
	H5														1070	1135	485	654	219	236	
	H6														1220	1285	560	804	294	311	
	H7														1290	1355	595	874	329	346	
T <sub>3</sub> 173..	H4	575	600	380	270	-	34	126	500	400	200	22	8	26	1070	1135	485	654	220	235	83
	H5														1220	1285	560	804	295	310	
	H6														1420	1485	665	1004	395	410	
	H7														1510	1575	705	1094	440	455	
T <sub>3</sub> 174..	H5	690	685	430	330	-	40	158	550	495	250	26	11	30	1350	1405	595	860	310	323	100
	H6														1560	1615	700	1070	415	428	
	H7														1665	1720	750	1175	467	480	
T <sub>3</sub> 175..	H4	690	685	430	330	-	45	159	625	495	250	26	13	30	1350	1405	595	860	312	323	100
	H5														1560	1615	700	1070	417	419	
	H6														1665	1720	750	1175	469	480	
	H7														1840	1895	840	1350	557	568	
T <sub>3</sub> 176..	H4	720	-	470	460	82	50	179	650	585	300	32	16	28	1480	-	660	958	316	334	-
	H5														1580	-	710	1058	366	384	
	H7														1955	-	900	1433	554	572	



**DIMENSIONS, mm**

TYPE		REEVING 2/1																							
		B1		B2	B3	B4	B5	B6	C	C1	C2	C3	D1	D2	L1		L2	L3	L4	L5	L6				
		T <sub>3..</sub>	T <sub>3..M</sub>												T <sub>3..</sub>	T <sub>3..M</sub>									
T <sub>3</sub> 012..	H4	575	600	380	270	-	34	23	470	400	200	22	6	26	1020	1085	460	604	97	106	83				
	H5														1070	1135						485	654	97	131
	H6														1220	12B5						560	804	89	214
	H7														1290	1355						595	874	110	228
T <sub>3</sub> 013..	H4	575	600	380	270	-	40	23	555	400	200	22	8	26	1070	1135	485	654	110	118	83				
	H5														1220	1285						560	804	90	212
	H6														1420	1485						665	1004	90	312
	H7														1510	1575						705	1094	110	338
T <sub>3</sub> 014..	H5	690	685	430	330	-	45	26	695	495	235	26	11	30	1350	1405	595	860	75	242	100				
	H6														1560	1615						700	1070	88	346
	H7														1665	1720						750	1175	75	398
T <sub>3</sub> 015..	H4	690	685	430	330	-	50	26	770	495	235	26	13	30	1350	1405	595	860	75	242	100				
	H5														1560	1615						700	1070	75	346
	H6														1665	1720						750	1175	75	398
	H7														1840	1895						840	1350	76	436
T <sub>3</sub> 016..	H4	720	-	470	460	82	56	38	790	585	300	32	16	28	1480	-	660	958	94	230	-				
	H5														1580	-						710	1058	94	280
	H7														1955	-						900	1433	99	462

T 02... - 2/1



DIMENSIONS, mm

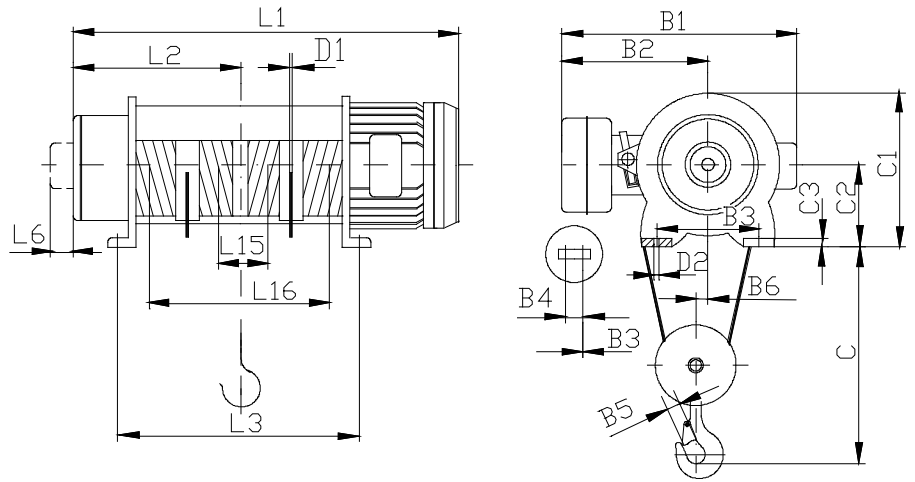
TYPE		REEVING 2/1																																								
		B1				B2	B5	B6	B7	C				C4	C5	D1	D2	L1				L2	L4	L5	L6	L7	L8															
		T..	T..M	T2..	T2..M					T..	T..M	T2..	T2..M					T..	T..M	T2..	T2..M																					
T 022.. T <sub>2</sub> 022..	H1	490	500	490	500	300	34	18	88	720	770	146	23	6	25.5	640	680	640	680	280	37	45	75	180	-																	
	H2															730	770	730	770	325	60	68				250																
	H3															810	850	810	850	365	80	88				250																
	H4															970	1010	970	1010	445	55	192				490																
	H5															1130	1170	1130	1170	525	55	272				650																
	H6															1220	1285	1220	1285	560	89	214				83	610															
	H7															1290	1355	1290	1355	595	110	228				680																
T 023.. T <sub>2</sub> 023..	H1	490	505	490	505	300	40	18	88	805	855	146	23	8	25.5	705	745	705	745	300	48	55	75	180	-																	
	H2															810	850	810	850	355	75	82				250																
	H3															910	950	910	950	405	100	106				250																
	H4															1110	1150	1110	1150	505	75	231				610																
	H5															1310	1350	1310	1350	605	149	332				810																
	H6															1420	1485	1420	1485	665	90	312				83	810															
	H7															1510	1575	1510	1575	705	110	338				900																
T 024.. T <sub>2</sub> 024..	H1	575	600	575	600	380	45	22	118	990	1040	200	30	11	35.5	805	870	805	870	355	45	51	83	200	-																	
	H2															915	980	915	980	410	73	79				270																
	H3															1015	1080	1015	1080	460	96	104				270																
	H4															1215	1280	1215	1280	560	90	212				610																
	H5															1415	1480	1415	1480	660	90	312				810																
	H6															1525	1615	1560	1615	700	88	346				100	860															
	H7															1630	1720	1665	1720	750	75	398				965																
T 025.. T <sub>2</sub> 025..	H1	575	620	575	620	380	50	22	118	1065	1115	200	30	13	35.5	850	935	880	935	370	52	59	83	200	-																	
	H2															970	1055	1000	1055	430	82	89				270																
	H3															1080	1165	1110	1165	485	110	116				270																
	H4															1300	1385	1330	1385	595	110	226				680																
	H5															1520	1605	1550	1605	705	110	336				900																
	H6															1630	1720	1665	1720	750	75	398				100	965															
	H7															1805	1895	1840	1895	840	76	436				1140																
T 026.. T <sub>2</sub> 026..	H1	640	685	690	685	430	56	26	130	1225	1275	242	46	16	46	890	980	925	980	380	49	66	100	225	-																	
	H2															995	1085	1030	1085	430	75	82				300																
	H3															1100	1190	1135	1190	485	101	108				300																
	H4															1310	1400	1345	1400	590	124	296				650																
	H5															1520	1610	1555	1610	695	124	296				860																
	H6															1720	740	-	-	470	71	38				68	1325	-	295	40	18	41	1920	1975	-	-	900	99	462	-	1145	50
	T 027..															H2	720	740	-	-	470	71				38	68	1505	-	295	40	18	41	1125	1160	-	-	500	77	82	-	370
H3		1285	1320	-	-	580	118	123	520																																	
H4		1445	1480	-	-	660	78	242	680																																	
H5		1660	1695	-	-	770	78	350	895																																	
H6		1875	1910	-	-	875	78	457	111																																	
H7		2085	2120	-	-	980	78	562	1320																																	



**DIMENSIONS, mm**

TYPE		REEVING 2/1																		
		B1		B2	B5	B6	B7	C	C4	C5	D1	D2	L1		L2	L4	L5	L6	L7	L8
		T <sub>3..</sub>	T <sub>3..M</sub>										T <sub>3..</sub>	T <sub>3..M</sub>						
T <sub>3</sub> 022..	H4	575	600	380	34	23	118	920	200	30	6	35.5	1020	1085	460	97	106	83	270	-
	H5						128	905	185	25		20.5	1070	1135	485	97	131		270	-
	H6						1220	1285	560	89		214	610	60						
	H7						1290	1355	595	110		228	680	60						
T <sub>3</sub> 023..	H4	575	600	380	40	23	118	985	200	30	8	35.5	1070	1135	485	110	118	83	270	-
	H5						1220	1285	560	90		212	610	60						
	H6						1420	1485	665	90		312	810	60						
	H7						1510	1575	705	110		338	900	60						
T <sub>3</sub> 024..	H5	690	685	430	45	26	144	1150	227	30	11	25.5	1350	1405	595	75	242	100	650	60
	H6												1560	1615	700	88	346		860	
	H7												1665	1720	750	75	398		965	
T <sub>3</sub> 025..	H4	690	685	430	50	26	144	1230	227	30	13	25.5	1350	1405	595	75	242	100	650	60
	H5												1560	1615	700	75	347		860	
	H6												1665	1720	750	75	398		965	
	H7												1840	1895	840	76	436		1140	
T <sub>3</sub> 026..	H4	720		470	56	38	68	1425	295	40	16	25.5	1480	-	660	94	230	-	690	50
	H5												1580	-	710	94	280		790	
	H7												1955	-	900	99	462		1145	

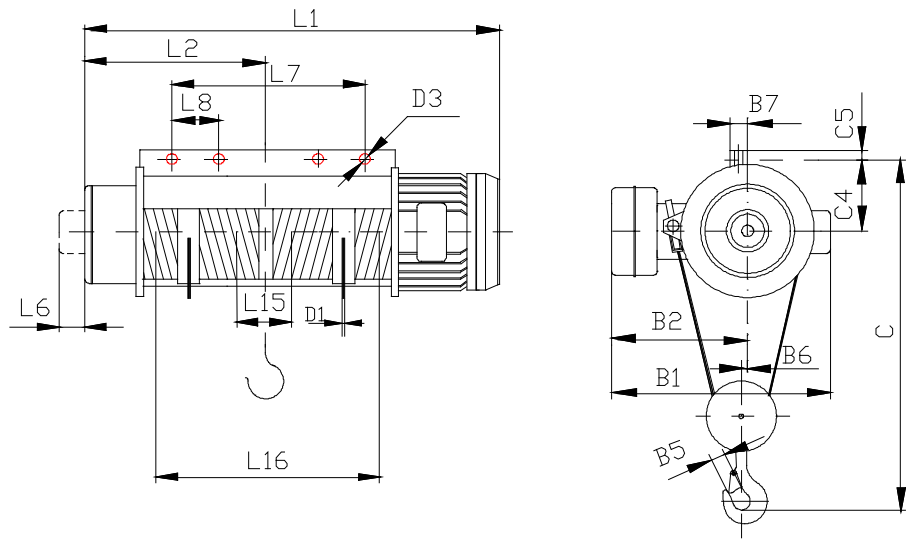
**TK01... - 4/2**



**DIMENSIONS, mm**

TYPE		REEVING 4/2																							
		B1				B2	B3	B4	B5	B6	C	C1	C2	C3	D1	D2	L1				L2	L3	L6	L15	L16
		TK..	TK..M	TK <sub>2</sub> ..	TK <sub>2</sub> ..M												TK..	TK..M	TK <sub>2</sub> ..	TK <sub>2</sub> ..M					
TK 013..	H3																810	850	810	850	405	570			372
	H4	590	605	590	605	400	200	-	34	35	455	308	155	17	6	21	910	950	910	950	505	770	75	100	574
	H5																1110	1150	1110	1150	605	970			774
TK 014..	H3																1015	1080	1015	1080	460	604			344
	H4	725	750	725	750	530	270	-	40	36	512	400	200	17	8	26	1215	1280	1215	1280	560	804	83	120	544
	H5																1415	1480	1415	1480	660	1004			744
TK 015..	H3																1080	1165	1110	1165	485	654			394
	H4	725	750	725	750	530	270	-	45	34	580	400	200	22	11	26	1300	1385	1330	1385	595	874	83	120	614
	H5																1520	1605	1550	1605	705	1094			834
TK 016..	H4	800	845	850	850	590	330	-	56	58	630	495	235	26	13	30	1310	1400	1345	1400	590	860	100	140	552
	H5																1520	1610	1555	1610	695	1070			762
TK 017..	H4																1445	1480	-	-	660	958			398
	H5	880	900	-	-	630	460	82	71	70	770	585	300	32	16	28	1660	1695	-	-	770	1173		160	772
	H6																1875	1910	-	-	875	1388			988
	H7																2085	2120	-	-	980	1598			1198

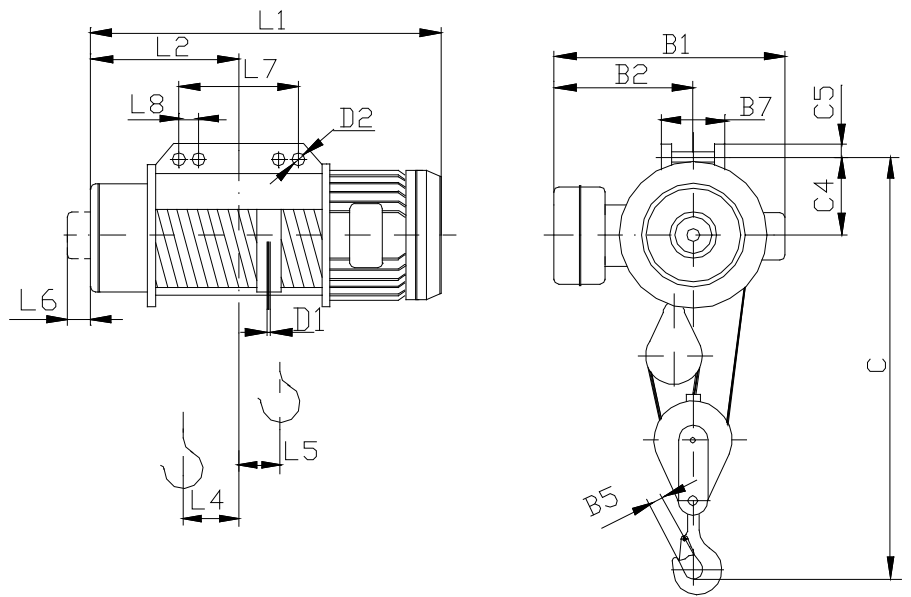
TK02... - 4/2



DIMENSIONS, mm

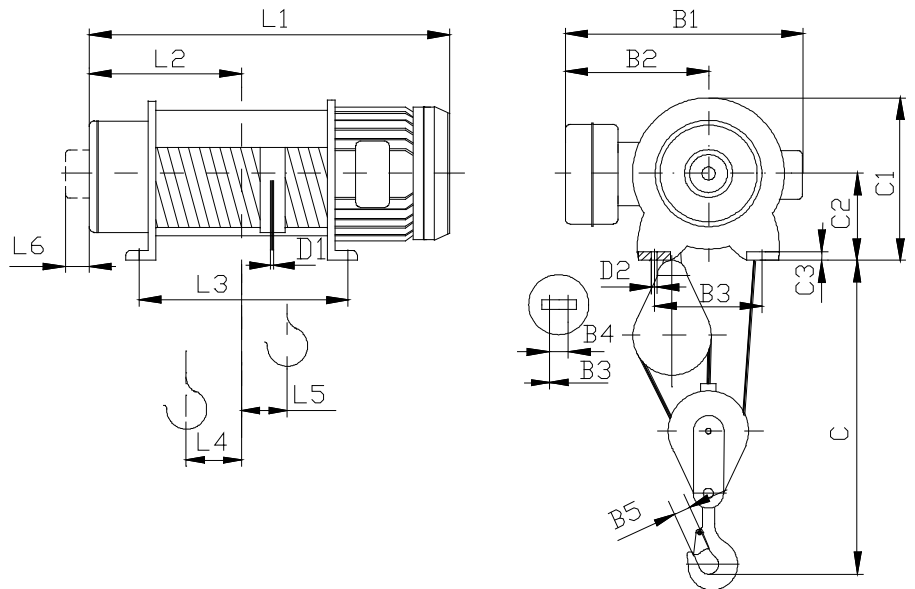
TYPE		REEVING 4/2																						
		B1				B2	B5	B6	B7	C	C4	C5	D1	D2	L1				L2	L6	L7	L8	L15	L16
		TK..	TK..M	TK <sub>2</sub> ..	TK <sub>2</sub> ..M										TK..	TK..M	TK <sub>2</sub> ..	TK <sub>2</sub> ..M						
TK 023..	H3								88		146	23			810	850	810	850	405		250	-		372
	H4	590	605	590	605	400	34	35	110	750	138	18	6	21	910	950	910	950	505	75	490	40	100	574
	H5														1110	1150	1110	1150	605		650			774
TK 024..	H3								118		200	30			1015	1080	1015	1080	460		270	-		344
	H4	725	750	725	750	530	40	36	128	910	185	25	8	26	1215	1280	1215	1280	560	83	610	60	120	544
	H5														1415	1480	1415	1480	660		810			744
TK 025..	H3								118		200	30			1080	1165	1110	1165	485		270	-		394
	H4	725	750	725	750	530	45	34	128	960	185	25	11	26	1300	1385	1330	1385	595	83	680	60	120	614
	H5														1520	1605	1550	1605	705		900			834
TK 026..	H4	800	845	850	850	590	56	58	144	1120	227	30	13	30	1310	1400	1345	1400	590	100	650	60	140	552
	H5														1520	1610	1555	1610	695		860			762
TK 027..	H4														1445	1480	-	-	660		680			398
	H5	880	900	-	-	630	71	70	68	1375	295	40	16	28	1660	1695	-	-	770	-	895	70	160	772
	H6														1875	1910	-	-	875		1110			988
	H7														2085	2120	-	-	980		1320			1198

**T 27... - 3/1**



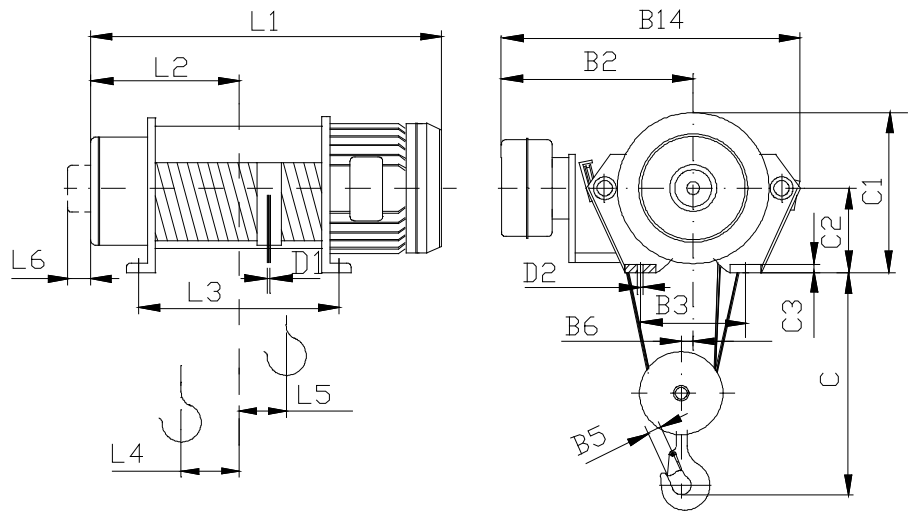
TYPE		REEVING 3/1																	
		B1		B2	B5	B7	C	C4	C5	D1	D2	L1		L2	L4	L5	L6	L7	L8
		T..	T..M									T..	T..M						
T 277..	H3	720	740	470	90	68	2495	295	40	18	41	1285	1320	580	118	127	-	520	70
	H4											1445	1480	445	55	192		680	

**T 33... - 3/1**



TYPE		REEVING 2/1																		
		B1		B2	B3	B4	B5	C	C1	C2	C3	D1	D2	L1		L2	L3	L4	L5	L6
		T..	T..M											T..	T..M					
T 012.. T <sub>2</sub> 012..	H3	720	740	470	460	82	90	1900	585	300	32	18	28	1285	1320	580	798	118	127	-
	H4													1445	1480	660	958	167	167	

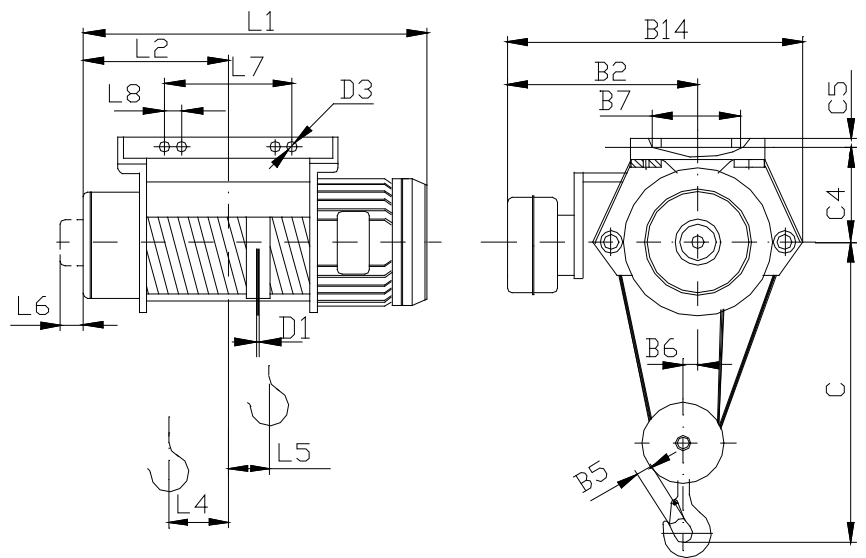
**T 35... - 4/1**



**DIMENSIONS, mm**

TYPE		REEVING 4/1																			
		B2	B3	B5	B6	B14	C	C1	C2	C3	D1	D2	L1				L2	L3	L4	L5	L6
		T..	T..M	T2..	T2..M																
T353..	H2	465	270	45	29	730	455	318	165	20	8	26	810	850	810	850	355	580	54	28	75
	H3																405			50	
T354..	H3	615	330	50	29	860	550	400	200	32	11	33	1015	1080	1015	1080	460	643	58	43	83
	H4												1215	1280	1215	1280	560	843	27	119	
T355..	H3	615	330	56	29	860	605	400	200	32	13	33	1080	1165	1110	1165	485	693	68	44	83
	H4												1300	1385	1330	1385	595	913	45	112	
T356..	H3	620	330	71	35	965	645	505	260	40	16	39	1100	1190	1135	1190	485	697	63	38	100
	H4												1310	1400	1345	1400	590	907	58	97	
	H5												1520	1610	1555	1610	695	1117	86	95	
T357..	H2	700	400	90	39	1080	780	610	315	42	18	37	1125	1160	-	-	500	604	57	23	-
	H3												1285	1320	-	-	580	764	82	22	
	H4												1445	1480	-	-	660	924	62	95	
	H5												1660	1695	-	-	770	1139	18	193	

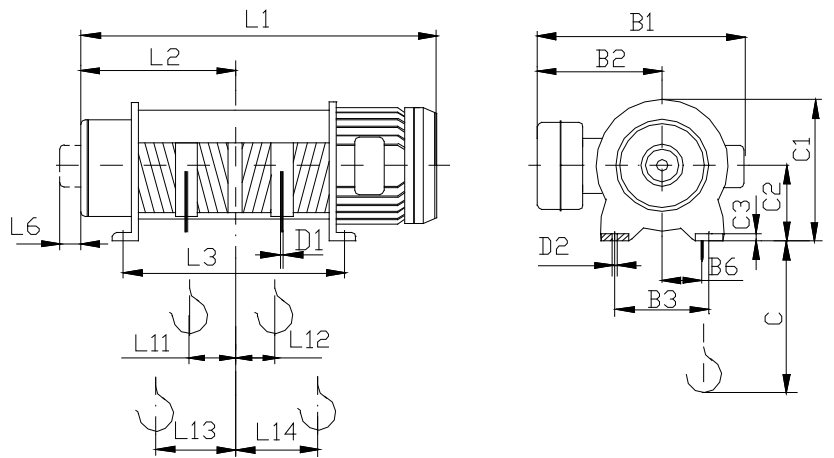
**T 36... - 4/1**



**DIMENSIONS, mm**

TYPE		REEVING 4/1																			
		B2	B5	B6	B7	B14	C	C4	C5	D1	D3	L1				L2	L4	L5	L6	L7	L8
		T..	T..M	T2..	T2..M																
T363..	H2	465	45	29	128	730	830	223	40	8	35.5	810	850	810	850	355	54	28	75	270	-
	H3																	50			
T364..	H3	615	50	29	128	860	1030	280	45	11	35.5	1015	1080	1015	1080	460	58	43	83	270	-
	H4				144						25.5	1215	1280	1215	1280	560	27	119		822	60
T365..	H3	615	56	29	144	860	1080	275	50	13	45.5	1080	1165	1110	1165	485	68	44	83	300	-
	H4							280			25.5	1300	1385	1330	1385	595	45	112		892	60
T366..	H3	620	71	35	84	965	1220	342	58	16	41	1100	1190	1135	1190	485	63	38	100	695	70
	H4											1310	1400	1345	1400	590	58	97		905	
	H5											1520	1610	1555	1610	695	86	95		1115	

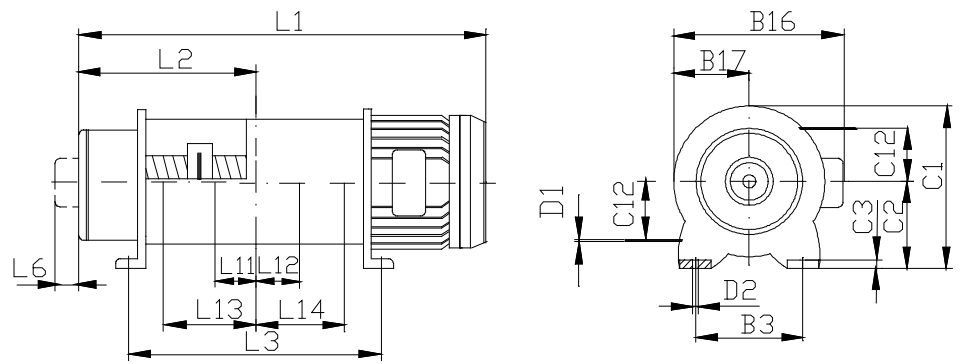
# T 51... - 2/2



## DIMENSIONS, mm

TYPE		REEVING 2/2																												
		B1				B2	B3	B6	C				C1	C2	C3	D1	D2	L1				L2	L3	L6	L11	L12	L13	L14		
		T..	T..M	T2..	T2..M				T..	T..M	T2..	T2..M						T..	T..M	T2..	T2..M									
T 513..	H2																810	850	810	850	355	470							156	142
	H3																910	950	910	950	405	570							206	192
	H4	490	505	490	505	300	200	89	400	450	308	155	17	6	21		1110	1150	1110	1150	505	770	75	36	22			306	292	
	H5																1310	1350	1310	1350	605	970							406	392
T 514..	H2																915	980	915	980	410	504							157	157
	H3																1015	1080	1015	1080	460	604							207	207
	H4	575	600	575	600	380	270	127	450	500	400	200	22	8	26		1215	1280	1215	1280	560	804	83	43	43			307	307	
	H5																1415	1480	1415	1480	660	1004							407	407
T 515..	H2																970	1055	1000	1055	430	544							168	104
	H3																1080	1165	1110	1165	485	654							223	219
	H4	575	620	575	620	380	270	129	525	575	400	200	22	11	26		1300	1385	1330	1385	595	874	83	47	43			333	329	
	H5																1520	1605	1550	1605	705	1094							443	439
T 516..	H3																1100	1190	1135	1190	485	650							228	204
	H4	640	685	690	685	430	330	159	550	600	495	235	26	13	30		1310	1400	1345	1400	590	860	100	58	34			333	309	
	H5																1520	1610	1555	1610	695	1070							438	414

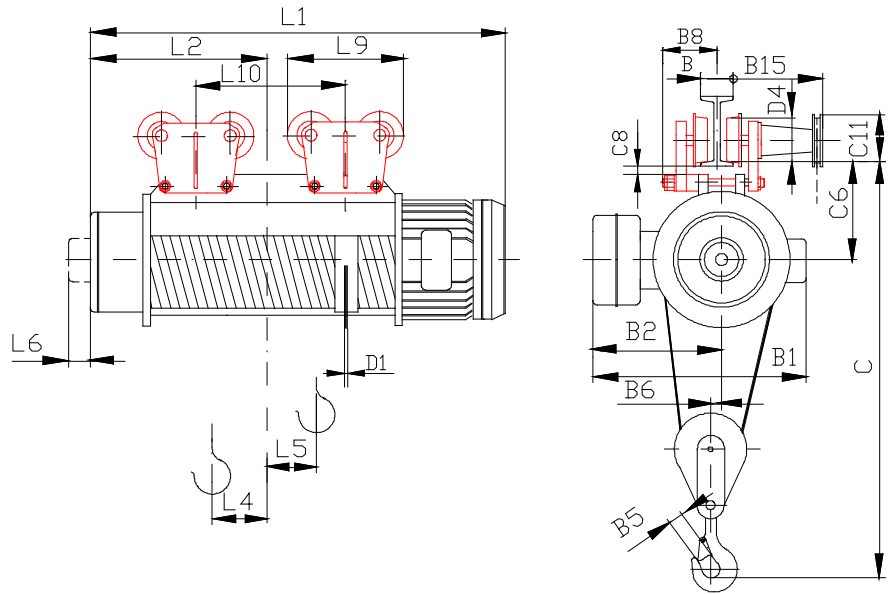
**T 52... - 2/2**



**DIMENSIONS, mm**

TYPE		REEVING 2/2																								
		B3	B16				B17	C1	C2	C3	C12	D1	D2	L1				L2	L3	L6	L11	L12	L13	L14		
			T..	T..M	T2..	T2..M								T..	T..M	T2..	T2..M									
T 523..	H2	200	343	358	343	358	153	308	155	17	89	6	21	810	850	810	850	355	470	75	36	22	156	142		
	H3													910	950	910	950						405	570	206	192
	H4													1110	1150	1110	1150						505	770	306	292
	H5													1310	1350	1310	1350						605	970	406	392
T 524..	H2	270	395	420	395	420	200	400	200	22	127	8	26	915	960	915	980	410	504	83	43	43	157	157		
	H3													1015	1080	1015	1080						460	604	207	207
	H4													1215	1280	1215	1280						560	804	307	307
	H5													1415	1480	1415	1480						660	1004	407	407
T 525..	H2	270	395	420	395	420	200	400	200	22	129	11	26	970	1055	1000	1055	430	544	83	47	43	168	164		
	H3													1080	1165	1110	1165						485	654	223	219
	H4													1300	1385	1330	1385						595	874	333	329
	H5													1520	1605	1550	1605						705	1094	443	439
T 526..	H3	330	455	500	455	500	245	495	250	26	159	13	30	1100	1190	1135	1190	485	650	100	58	34	228	204		
	H4													1310	1400	1345	1400						590	860	333	309
	H5													1520	1610	1555	1610						695	1070	438	414

T 09... - 2/1



DIMENSIONS, mm

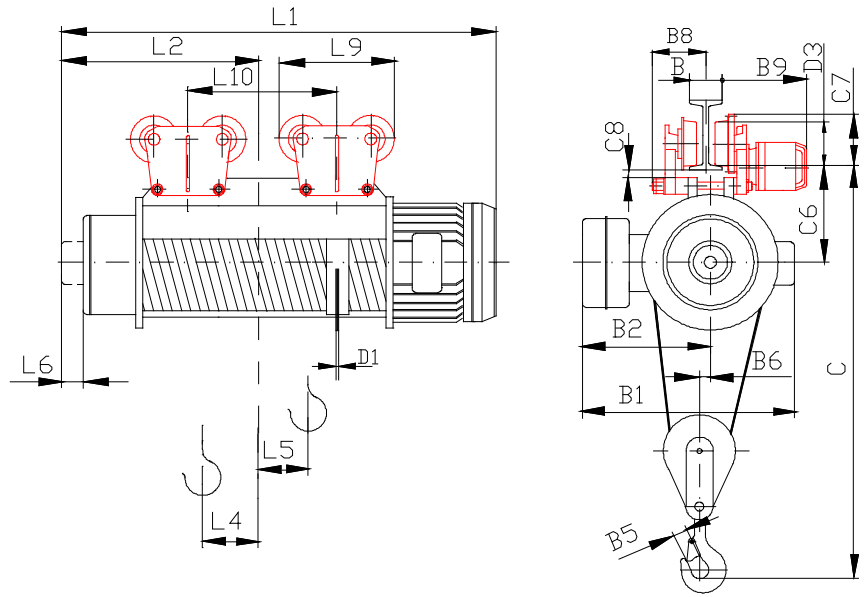
TYPE		REEVING 2/1																								
		B1				B2	B5	B6	B8	B15	C				D1	D4	L1				L2	L4	L5	L6	L9	L10
		T..	T..M	T2..	T2..M						T..	T2..	T2..M	C6			C8	C11	T..	T..M						
T 092.. T2 092..	H1									780	830	204	20			640	680	640	680	280	37	45				
	H2									810	850	277	10			730	770	730	770	325	60	68				-
	H3	490	500	490	500	300		18		92	220					810	850	810	850	36	80	88	75			
	H4															970	1010	970	1010	445	55	192		387		450
	H5															1130	1170	1130	1170	525	55	272				610
	H6	575	600	575	600	380										1220	1285	1220	1285	560	89	214	83			550
	H7															1290	1355	1290	1355	595	110	228				620
T 093.. T2 093..	H1															705	745	705	745	300	48	55				
	H2															810	850	810	850	355	75	82				-
	H3	490	505	490	505	300		18		92	220					910	950	910	950	405	100	106	75			
	H4															1110	1150	1110	1150	505	75	231		387		570
	H5															1310	1350	1310	1350	605	149	332				770
	H6	575	600	575	600	380										1420	1485	1420	1485	665	90	312	83			750
	H7															1510	1575	1510	1575	705	110	338				840
T 094.. T2 094..	H1															805	870	805	870	355	45	51				
	H2															915	980	915	980	410	73	79				-
	H3	575	600	575	600	380		22		118	260					1015	1080	1015	1080	460	96	104	83			
	H4															1215	1280	1215	1280	560	90	212		503		550
	H5															1415	1480	1415	1480	660	90	312				750
	H6	640	685	690	685	430										1525	1615	1560	1615	700	88	346	100			800
	H7															1630	1720	1665	1720	750	75	398				905
T095.. T2 095..	H1															850	935	880	935	370	52	59				
	H2															970	1055	1000	1055	430	82	89				-
	H3	575	620	575	620	380		22		118	260					1080	1165	1110	1165	485	110	116	83			
	H4															1300	1385	1330	1385	595	110	226		503		620
	H5															1520	1605	1550	1605	705	110	336				840
	H6	640	685	690	685	430										1630	1720	1665	1720	750	75	398	100			905
	H7															1805	1895	1840	1895	840	76	436				1080
T096.. T,096..	H1															890	980	925	980	380	49	66				
	H2															995	1085	1030	1085	430	75	82		563		-
	H3	640	685	690	685	430		26	140	300	300	1300	1350	317	11	250							100			
	H4															1100	1190	1135	1190	485	101	108				590
	H5															1310	1400	1345	1400	590	124	296		503		800
H7	720	740			470										1520	1610	1555	1610	695	124	296				800	
H7															1920	1975	-	-	900	99	462	-			1095	



**DIMENSIONS, mm**

TYPE		REEVING 2/1																				
		B1		B2	B5	B6	B8	B15	C	C6	C8	C11	D1	D4	L1		L2	L4	L5	L6	L9	L10
		T <sub>3..</sub>	T <sub>3..M</sub>												T <sub>3..</sub>	T <sub>3..M</sub>						
T <sub>3</sub> 092..	H4	575	600	380	34	23	118	260	990	272	24	208	6	175	1020	1085	460	97	106	83	503	-
	H5						92	220	1050	331	10	143		120	1070	1135	485	97	131			550
	H6						1220	1285	560	89	214	387	620									
	H7						1290	1355	595	110	228	-										
T <sub>3</sub> 093..	H4	575	600	380	40	23	118	260	1055	272	24	208	8	175	1070	1135	485	110	118	83	503	-
	H5						92	220	1115	331	10	143		120	1220	1285	560	90	212			550
	H6						1420	1485	665	90	312	387	750									
	H7						1510	1575	705	110	338	840										
T <sub>3</sub> 094..	H5	690	685	430	45	26	118	260	1130	410	10	208	11	175	1350	1405	595	75	242	100	503	590
	H6														1560	1615	700	88	348			800
	H7														1665	1720	750	75	396			905
T <sub>3</sub> 095..	H4	690	685	430	50	26	118	260	1415	410	10	208	13	175	1350	1405	595	75	242	100	503	590
	H5														1560	1615	700	75	347			800
	H6														1665	1720	750	75	398			905
	H7														1840	1895	840	76	436			1080
T <sub>3</sub> 096..	H4	720	-	470	56	38	118	260	1580	492	10	208	16	175	1480	-	660	94	230	-	503	640
	H5								1580						-	710	94	280	740			
	H7								1620						1955	-	900	99	462			1095

# T 10... - 2/1



## DIMENSIONS, mm

TYPE		REEVING 2/1																																	
		B1				B2	B5	B6	B8	B9					C		C6	C7	C8	D1	D4	L1				L2	L4	L5	L6	L9	L10				
		T..	T..M	T2..	T2..M					Traveling speed, m/min					T..	T..M						T2..	T2..M	T..	T..M							T2..	T2..M		
						20 <sup>1)</sup>	20 32	8 10 12 15	12/4 15/5 20/6	32/10																									
T102.. T2102..	H1	490	500	490	500	300	34	18	92	205	250	310	300	240	850	900	277	140	6	120	640	680	640	680	280	37	45	75	387	-					
	H2																				730	770	730	770	325	60	68								
	H3																				810	850	810	850	365	80	88								
	H4																				970	1010	970	1010	445	55	192								
	H5																				1130	1170	1130	1170	525	55	272								
	H6																				1220	1285	1220	1285	560	89	218								
	H7																				1290	1355	1290	1355	595	110	224				83	450	650	550	620
T103.. T2103..	H1	490	505	490	505	300	40	18	92	205	250	310	300	240	860	900	204	140	8	120	705	745	705	745	300	48	55	75	387	-					
	H2																				810	850	810	850	355	75	82								
	H3																				910	950	910	950	405	100	106								
	H4																				1110	1150	1110	1150	505	75	231								
	H5																				1310	1350	1310	1350	605	149	332								
	H6																				1420	1485	1420	1485	665	90	312								
	H7																				1510	1575	1510	1575	705	110	338				83	750	840		
T104.. T2104..	H1	575	600	575	600	380	45	22	118	265	260	325	360	295	1060	1110	272	200	11	175	805	870	805	870	355	45	51	83	503	-					
	H2																				915	980	915	980	410	73	79								
	H3																				1015	1080	1015	1080	460	96	104								
	H4																				1215	1280	1215	1280	560	90	212								
	H5																				1415	1480	1415	1480	660	90	312								
	H6																				1525	1615	1560	1615	700	88	346								
	H7																				1630	1720	1665	1720	750	75	398				100	800	905		
T105.. T2105..	H1	575	620	575	620	380	50	22	118	265	260	325	360	295	1140	1190	272	200	13	175	850	935	880	935	370	52	59	83	503	-					
	H2																				970	1055	1000	1055	430	82	89								
	H3																				1080	1165	1110	1165	485	110	116								
	H4																				1300	1385	1330	1385	595	110	226								
	H5																				1520	1605	1550	1605	705	110	336								
	H6																				1630	1720	1665	1720	750	75	398								
	H7																				1805	1895	1840	1895	840	76	436				100	905	1080		
T106.. T2106..	H1	640	685	690	685	430	56	26	140	290	300	330	365	-	1300	1350	317	230	11	210	890	980	925	980	380	49	66	100	563	-					
	H2																				995	1065	1030	1085	430	75	82								
	H3																				1100	1190	1135	1190	485	101	108								
	H4																				1310	1400	1345	1400	590	124	191								
	H5																				1520	1610	1555	1610	695	124	296								
	H6																				1920	1975	-	-	900	99	462								
	H7																				2120	-	-	-	1000	118	123				503	800	1095		
T107..	H2	720	740	-	-	470	71	38	140	270	330	330	365	300	1750	-	540	230	15	18	210	1125	1160	-	-	500	77	82	-	563	-				
	H3																					1285	1320	-	-	580	118	123							
	H4																					1445	1480	-	-	660	78	242							
	H5																					1660	1695	-	-	770	78	350							
	H6																					1875	1910	-	-	875	78	457							
	H7																					2085	2120	-	-	960	78	562				503	825	1040	1250

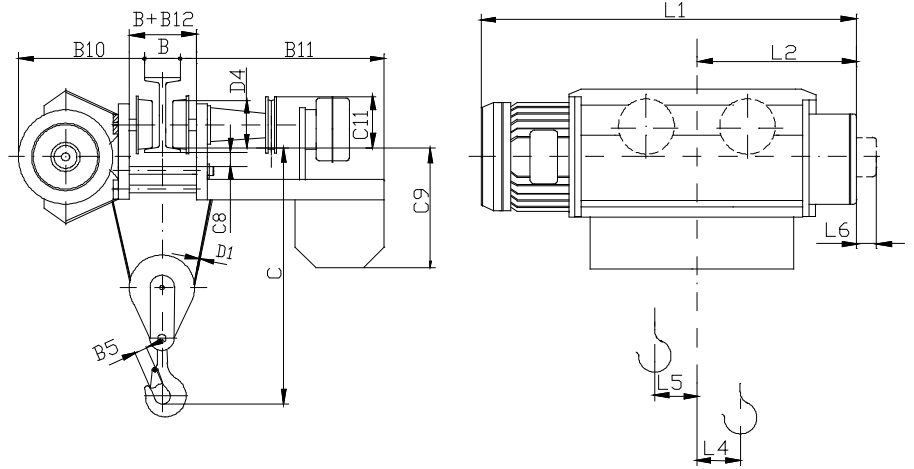
1) without brake

**DIMENSIONS, mm**

TYPE		REEVING 2/1																								
		B1		B2	B5	B6	B8	B9					C	C6	C7	C8	D1	D4	L1		L2	L4	L5	L6	L9	L10
		T <sub>3..</sub>	T <sub>3..M</sub>					Traveling speed, m/min																		
								20 <sup>1)</sup>	20 32	8 10 12 15	12/4 15/5 20/6	32/10														
T <sub>3</sub> 102..	H4	575	600	380	34	23	118	265	260	325	360	295	990	272	200	24	6	175	1020	1085	460	97	106	83	503	-
	H5						92	205	250	310	300	240	1050	331	140	10		120	1070	1135	485	97	131		387	550
	H6						92	205	250	310	300	240	1050	331	140	10		120	1220	1285	560	89	214		387	550
	H7						92	205	250	310	300	240	1050	331	140	10		120	1290	1355	595	110	228		387	620
T <sub>3</sub> 103..	H4	575	600	380	40	23	118	265	260	325	360	295	1055	272	200	24	8	175	1070	1135	485	110	118	83	503	-
	H5						92	205	250	310	300	240	1115	331	140	10		120	1220	1285	560	90	212		387	550
	H6						92	205	250	310	300	240	1115	331	140	10		120	1420	1485	665	90	312		387	750
	H7						92	205	250	310	300	240	1115	331	140	10		120	1510	1575	705	110	338		387	840
T <sub>3</sub> 104..	H5	690	685	430	45	26	118	265	260	325	360	295	1130	410	200	10	11	175	1350	1405	595	75	242	100	503	590
	H6																		1560	1615	700	88	346			800
	H7																		1665	1720	750	75	398			905
T <sub>3</sub> 105..	H4	690	685	430	50	26	118	265	260	325	360	295	1415	410	200	10	13	175	1350	1405	595	75	242	100	503	590
	H5																		1560	1615	700	75	347			800
	H6																		1665	1720	750	75	398			905
	H7																		1840	1895	840	76	436			1080
T <sub>3</sub> 106..	H4	720	-	470	56	38	118	265	260	325	360	295	1580	492	200	10	16	175	1480	-	660	94	230	-	503	640
	H5												1580						-	710	94	280	740			
	H7												1620						-	900	99	462	1095			

1) without brake

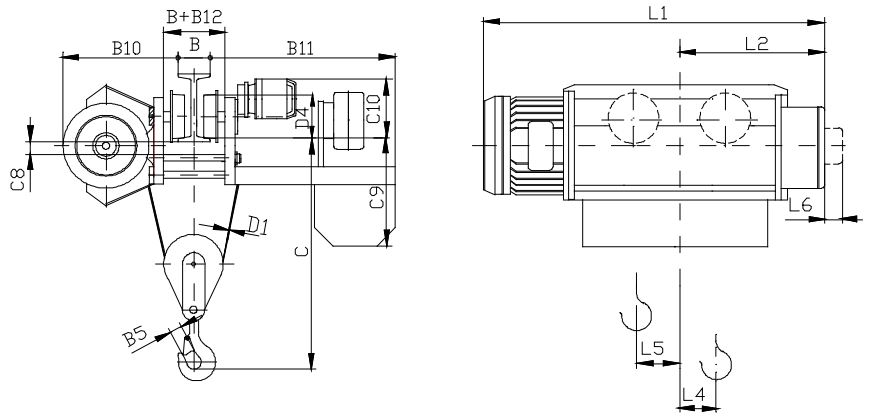
# T 44... - 2/1



## DIMENSIONS, mm

TYPE		REEVING 2/1														COUNTER - WEIGHT, KG															
		B5	B10	B11	B12	C	C8	C9	C11	D1	D4	L1								L2	L4	L5	L6								
												T..	T..M	T2..	T2..M																
T 442..	H1																														
	H2	34	370	550	104	465	19	390	212	6	120	640	680	640	680	280	37	32	75	34	45	34	45								
	H3											730	770	730	770	325	82	32		38	47	38	47								
T 443..	H1																														
	H2	40	370	550	104	525	19	390	212	8	120	705	745	705	745	300	54	38	75	45	53	45	53								
	H3											810	850	810	850	365	122	32		48	61	48	61								
T 444..	H1																														
	H2	45	480	675	126	725	22	490	270	11	175	805	870	805	870	355	48	43	83	57	75	57	75								
	H3											915	980	915	980	410	103	43		58	76	58	76								
T 445..	H1																														
	H2	50	480	675	126	725	22	490	270	13	175	1015	1080	1015	1080	460	153	43	83	59	77	59	77								
	H3											850	935	880	935	370	53	54		73	101	75	101								
T 446..	H1																														
	H2	56	585	805	144	785	25	485	314	16	210	970	1055	1000	1055	430	113	54	83	76	103	78	103								
	H3											1080	1165	1110	1165	485	168	54		78	104	80	104								
T 446..	H1																														
	H2																			890	980	925	980	380	47	38	100	110	140	126	144
	H3											995	1085	1030	1085	430	99	38		113	145	131	148								
																				1100	1190	1135	1190	485	152	38		117	148	135	151

# T 45... - 2/1

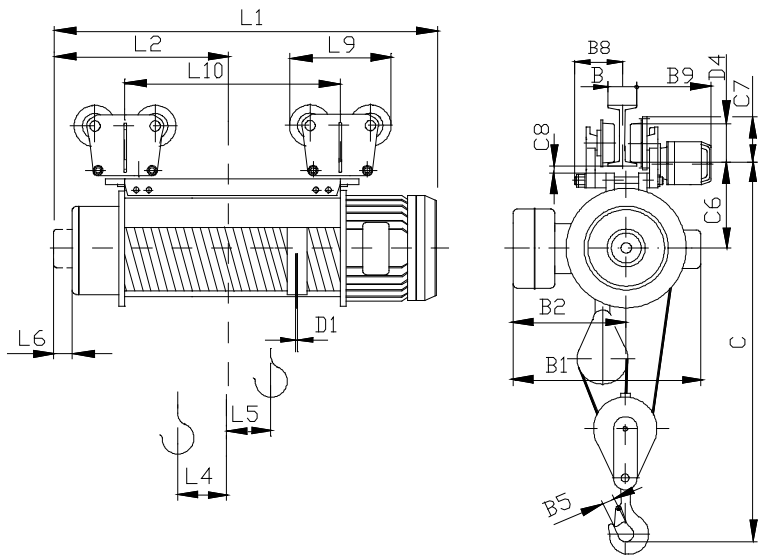


## DIMENSIONS, mm

TYPE	REEVING 2/1																COUNTER - WEIGHT, KG													
	B5	B10	B11	B12	C	C8	C9	C10					D1	D4	L1				L2	L4	L5	L6	T..	T..M	T2..	T2..M				
								Traveling speed, m/min							T..	T..M	T2..	T2..M												
								20 <sup>1)</sup>	20	8	12/4	32/10																		
T 452..	H1	34	370	550	104	465	19	390	206	204	238	257	223	6	120	640	680	640	680	280	37	32	75	34	45	34	45			
	H2															730	770	730	770					325	82	32	38	47	38	47
	H3															810	850	810	850					365	122	32	42	50	42	50
T 453..	H1	40	370	550	114	525	19	390	206	204	238	257	223	8	120	705	745	705	745	300	54	38	75	45	53	45	53			
	H2															810	850	810	850					355	106	38	48	61	48	61
	H3															910	950	910	950					405	156	38	52	68	52	68
T 454..	H1	45	480	675	126	725	22	490	245	252	290	290	252	11	175	805	870	805	870	355	48	43	83	57	75	57	75			
	H2															915	980	915	980					410	103	43	58	76	58	76
	H3															1015	1080	1015	1080					460	153	43	59	77	59	77
T 455..	H1	50	480	675	126	725	22	490	245	252	290	290	252	13	175	850	935	880	935	370	53	54	83	73	101	75	101			
	H2															970	1055	1000	1055					430	113	54	76	103	78	103
	H3															1080	1165	1110	1165					485	168	54	78	104	80	104
T 456..	H1	56	585	805	144	785	25	485	273	280	320	320	-	16	210	890	980	925	980	380	47	38	100	110	140	126	144			
	H2															995	1085	1030	1085					430	99	38	113	145	131	148
	H3															1100	1190	1135	1190					485	152	38	117	148	135	151

1) without brake

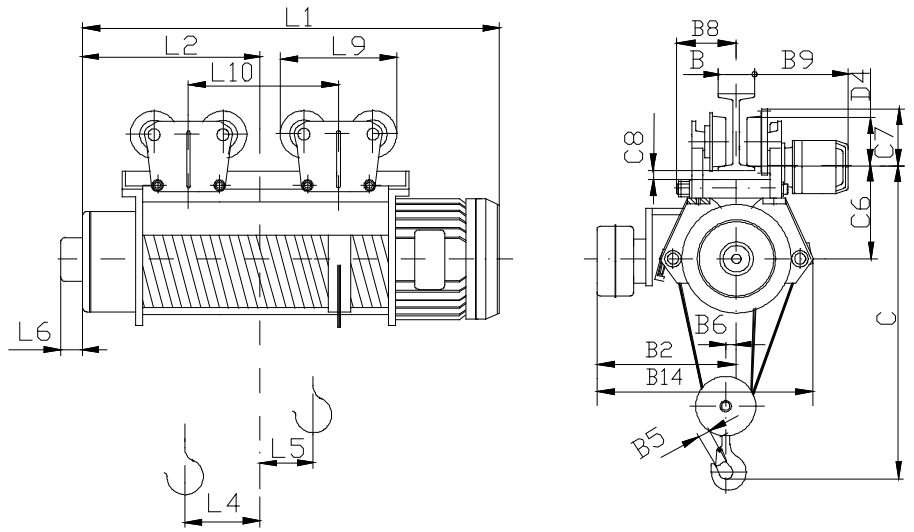
# T 31... - 3/1



TYPE	REEVING 2/1																									
	B1		B2	B5	B6	B8	B9					C	C6	C7	C8	D1	D4	L1		L2	L4	L5	L6	L9	L10	
	T..	T..M					Traveling speed, m/min											T..	T..M							
							20 <sup>1)</sup>	20	8	12/4	32/10															
T 317..	H1	720	740	470	90	-	140	290	300	330	365	-	2740	540	230	15	6	210	1285	1320	580	118	127	-	563	520
	H2																		1445	1480						660

1) without brake

# T 39... - 4/1

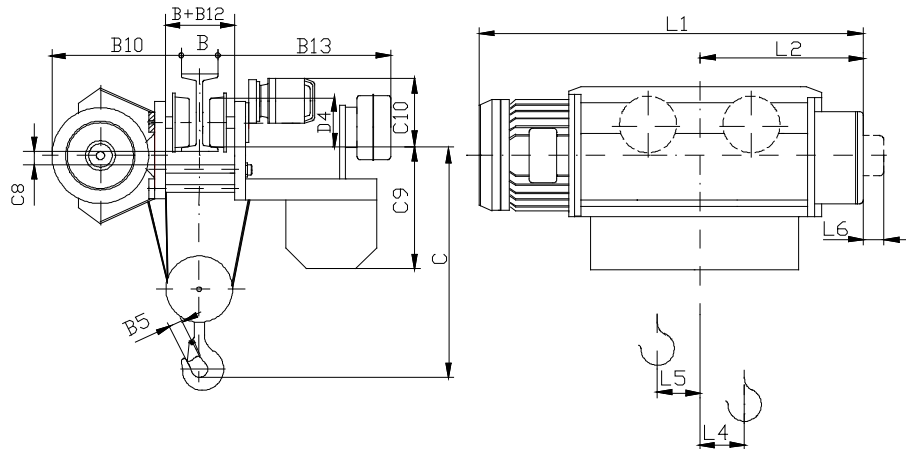


## DIMENSIONS, mm

TYPE		REEVING 4/1																									
		B2	B5	B6	B8	B9				B14	C	C6	C7	C8	D1	D4	L1				L2	L4	L5	L6	L9	L10	
						Traveling speed m/min											T..	T..M	T <sub>2</sub> ..	T <sub>2</sub> ..M							
						20 <sup>1)</sup>	20	8	12/4																		32/10
T393..	H2	490	45	29	118	265	260	325	360	295	730	905	296	200	15	8	175	910	950	910	950	405	54	28	75	503	-
	H3																	1110	1150	1110	1150	505	50				
T394..	H3	615	50	29	118	265	260	325	360	295	860	1105	353	200	10	11	175	1015	1080	1015	1080	460	58	43	83	503	-
	H4											1225	473					1215	1280	1215	1280	560	27	119			762
T395..	H3	615	56	29	140	290	300	330	365	-	860	1155	350	230	7	13	210	1080	1165	1110	1165	485	68	44	83	563	-
	H4				118	265	260	325	360	295		1275	473	200	10			175	1300	1385	1330	1385	595	45			112
T396..	H3	680	71	35	140	290	300	330	365	-	965	1450	573	230	15	16	210	1100	1190	1135	1190	485	63	38	100	563	625
	H4																	1310	1400	1345	1400	590	58	97			835
	H5																	1520	1610	1555	1610	695	86	95			1045
T397..	H2	700	90	39	140	290	300	330	365	-	1080	1730	633	230	15	18	210	1125	1160	-	-	500	57	23	-	563	604
	H3																	1285	1320	-	-	580	82	22			764
	H4																	1445	1480	-	-	660	62	95			924
	H5																	1660	1695	-	-	770	18	193			1139

1) - without brake

# T 78... - 4/1

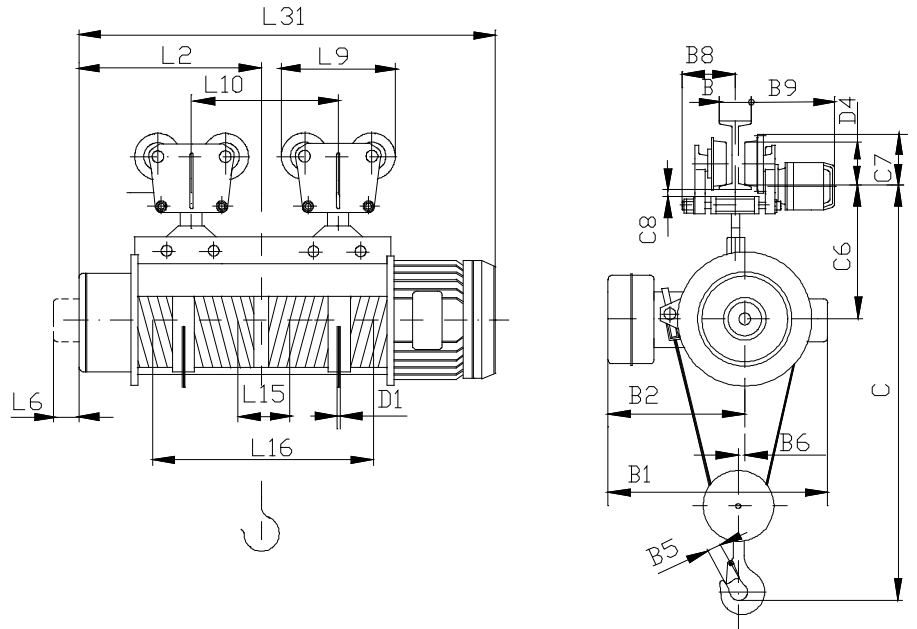


## DIMENSIONS, mm

TYPE		REEVING 4/1																												
		B5	B10	B12	B13	C				C8	C9	C10					D1	D4	L1				L2	L4	L5	L6	COUNTER-WEIGHT, KG			
												Traveling speed, m/min							T..	T..M	T2..	T2..M					T..	T..M	T2..	T2..M
						RUNWAY WIGHT, MM						20 <sup>1)</sup>	20 32	8 10 12 15	12/4 15/5 20/6	32/10														
						150.. .200	220.. .300	320.. .400	420.. .500																					
T783..	H3	45	392	128	575	500	640	750	870	24	392	245	252	290	290	252	8	175	910	950	910	950	405	85	12	75	95	105	95	105
	H4																		1110	1150	1110	950	505	185	39		100	110	100	110
T784..	H3	50	502	128	680	-	610	660	760	15	438	245	252	290	290	252	11	175	1015	1080	1015	1080	460	43	50	83	185	220	185	220
	H4																		1215	1280	1215	1280	560	143	0		210	240	210	240
T785..	H3	56	510	144	685	-	690	750	860	15	475	273	280	320	320	-	13	210	1080	1165	1110	1165	485	52	56	83	220	260	220	260
	H4																		1300	1385	1330	1385	595	162	0		240	290	240	290
T786..	H3	71	595	144	700	-	820	820	850	15	490	273	280	320	320	-	16	250	1100	1190	1135	1190	485	35	68	100	250	335	250	335
	H4																		1310	1400	1345	1400	590	140	15		295	380	295	380
	H5																		1520	1610	1555	1610	695							

1) without brake

# Tk 10... - 4/2



## DIMENSIONS, mm

TYPE		REEVING 4/2																																		
		B1				B2	B5	B6	B8	B9					C	C6	C7	C8	D1	D4	L1				L2	L6	L9	L10	L15	L16						
		TK. .	TK. .M	TK <sub>2</sub> ..	TK <sub>2</sub> ..M					Traveling speed m/min												TK. .	TK. .M	TK <sub>2</sub> .	TK <sub>2</sub> ..M											
										20 <sup>1)</sup>	20 32	8 10 12 15	12 15 20 25	12 15 20 25																	32 /4 /	32 /	TK <sub>2</sub> ..M			
TK 103..	H3														204		20				810	850	810	850	405											
	H4	590	605	590	605	400	34	35	92	205	250	310	300	240	890	277	140	10	6	120	910	950	910	950	505	75	387			570	100	574				
	H5																				1110	1150	1110	1150	605			770						774		
TK 104..	H3															272		24				1015	1080	1015	1080	460										344
	H4	725	750	725	750	530	40	36	118	265	260	325	360	295	1095	368	200	10	8	175	1215	1280	1215	1280	560	83	503			120		544				
	H5																				1415	1480	1415	1480	660									744		
TK 105..	H3															272		24				1080	1165	1110	1165	485										394
	H4	725	750	725	750	530	45	34	118	265	260	325	360	295	1145	368	200	10	11	175	1300	1385	1330	1385	595	83	503			550	120	614				
	H5																				1520	1605	1550	1605	705			750						834		
TK 106..	H4	800	845	850	850	590	56	58	118	265	260	325	360	295	1290	410	200	10	13	175	1310	1400	1345	1400	590	100	503			620	140	552				
	H5																				1520	1610	1555	1610	695			840						762		
TK 107..	H4																					1445	1480	-	-	660					610		398			
	H5																					1660	1695	-	-	770					825		772			
	H6	880	900	-	-	630	71	70	140	290	300	330	365	-	1620	540	230	15	15	210	1875	1910	-	-	875		563			1040	160	988				
	H7																					2085	2120	-	-	980					1250		1198			

1) - without brake







**PODEM GABROVO Ltd.**

HOISTS & CRANE COMPONENTS

[www.podem-gabrovo.com](http://www.podem-gabrovo.com)

**3A "1 May" st.  
5300 Gabrovo  
Bulgaria**

**tel. +359 66 804041  
fax +359 66 804635  
email: [info@podem.org](mailto:info@podem.org)**

**[www.podem-gabrovo.com](http://www.podem-gabrovo.com)**